



Document 2009 2186

Book 2009 Page 2186 Type 06 026 Pages 1
Date 7/08/2009 Time 2:16 PM
Rec Amt \$7.00

INDX ✓
ANNO
SCAN
CHEK

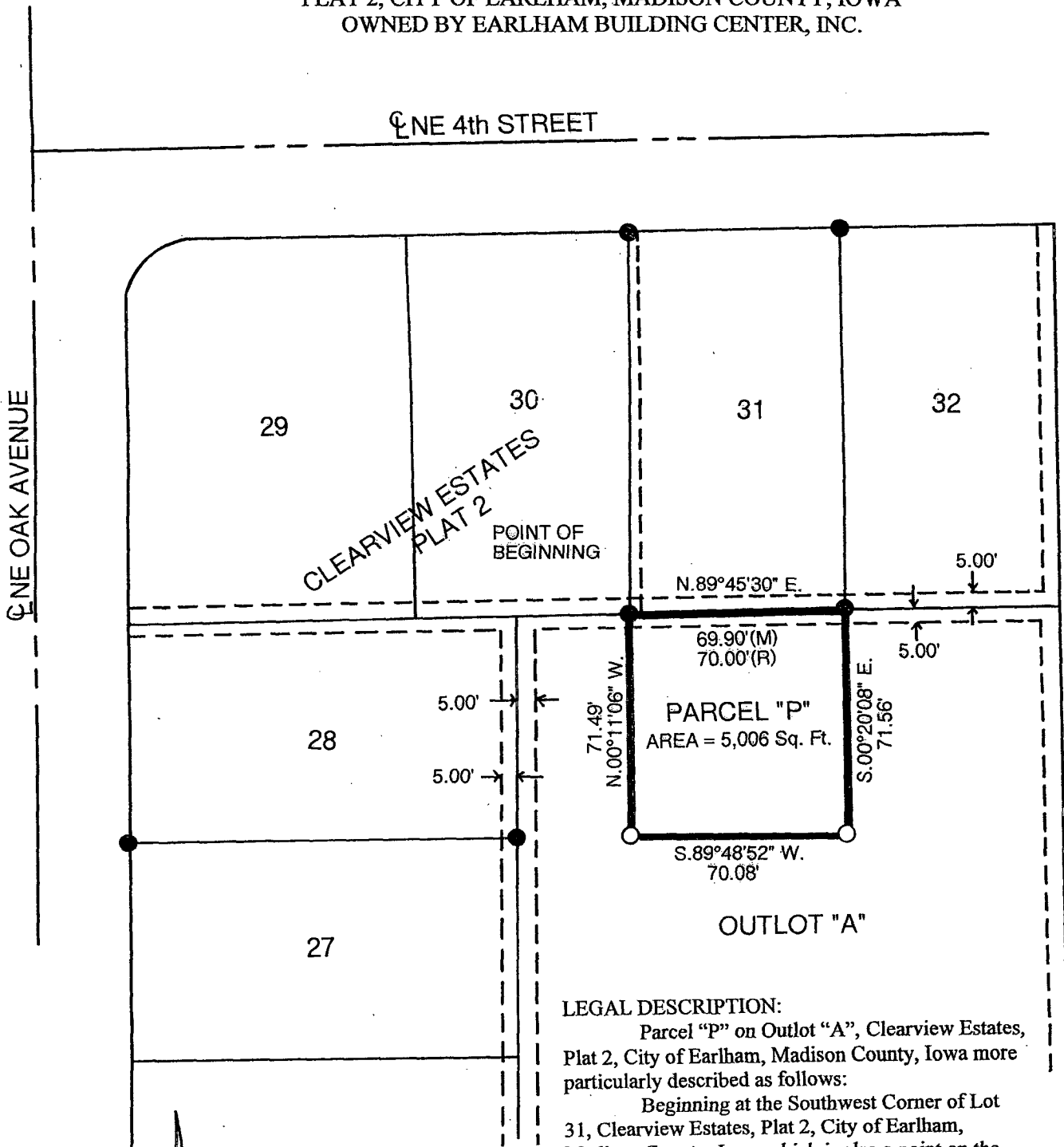
LISA SMITH, COUNTY RECORDER
MADISON COUNTY IOWA

VANCE & HOCHSTETLER, P.C. • CONSULTING ENGINEERS • WINTERSET, IOWA • 50273

09-626

CHARLES T. VANCE • 110 WEST GREEN ST., WINTERSET, IOWA • (515) 462-3995
JAMES M HOCHSTETLER • 110 WEST GREEN ST., WINTERSET, IOWA • FAX: (515) 462 9845

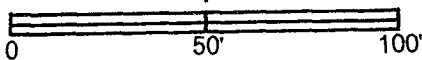
PLAT OF SURVEY IN OUTLOT "A", CLEARVIEW ESTATES,
PLAT 2, CITY OF EARLHAM, MADISON COUNTY, IOWA
OWNED BY EARLHAM BUILDING CENTER, INC.



LEGAL DESCRIPTION:

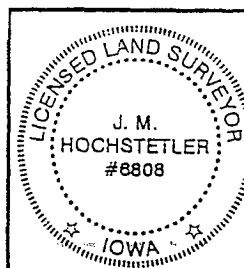
Parcel "P" on Outlot "A", Clearview Estates, Plat 2, City of Earlham, Madison County, Iowa more particularly described as follows:

Beginning at the Southwest Corner of Lot 31, Clearview Estates, Plat 2, City of Earlham, Madison County, Iowa which is also a point on the North line of Outlot "A"; thence North 89°45'30" East 69.90 feet along the North line of Outlot "A" to the Southeast Corner of Lot 31; thence South 00°20'08" East 71.56 feet; thence South 89°48'52" West 70.08 feet; thence North 00°11'06" West 71.49 feet to the Point of Beginning containing 0.115 acres (5,006 Sq. Ft.) and is subject to a 5.00 foot wide public utility easement along the North line of Parcel.



DATE OF SURVEY: 6-25-09

- CAPPED IRON ROD (CIR) #6808 SET
- CIR #6808 FOUND
- - - PUBLIC UTILITY EASEMENT
- (M) MEASURED DISTANCE
- (R) RECORDED DISTANCE



I hereby certify that this land surveying document was prepared and the related survey work was performed by me or under my direct personal supervision and that I am a duly licensed Land Surveyor under the laws of the State of Iowa.

J.M. Hochstetler
 J.M. HOCHSTETLER
 License number 6808 Date 7/8/09
 My license renewal date is December 31, 2009
 Pages or sheets covered by this seal: 1