

BK: 2025 PG: 3310  
Recorded: 12/5/2025 at 10:25:33.0 AM  
Pages 1  
County Recording Fee: \$7.00  
Iowa E-Filing Fee: \$3.00  
Combined Fee: \$10.00  
Revenue Tax: \$0.00  
BRANDY L. MACUMBER, RECORDER  
Madison County, Iowa



GARDEN & ASSOC.

806 Wyoming Ave., Creston, Iowa 50801 Phone: (641)782-4005

## UNITED STATES PUBLIC LAND SURVEY CORNER CERTIFICATE OF

LAND SURVEY MONUMENTS SITUATED IN SECTION 19, TOWNSHIP 76 NORTH, RANGE 27 WEST  
OF THE 5TH P.M. IN MADISON COUNTY, IOWA.

PREVIOUSLY RECORDED IN NO CERTIFICATE OF RECORD IN COUNTY RECORDER'S OFFICE.

MONUMENT DESCRIPTION AND REMARKS: ① W1/4 COR. NW1/4 SEC. 19-76-27, SEARCH AREA FOR 1/2" ROD

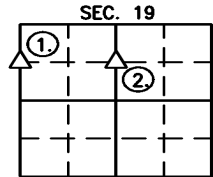
PER COUNTY ENGINEER TIES, FOUND NOTHING, DUE TO HIGHWAY REALIGNMENT. THEREFORE SET 5/8" X 24" REBAR W/ YPC#

24655 AT MID POINT BETWEEN FOUND MONUMENTS AT THE NW & W1/4 CORNERS SEC. 19-76-27.

② E1/4 COR. NW1/4 SEC. 19-76-27, SEARCH FOR 1/2" REBAR AS SHOWN ON CEDAR WOOD PLAT, FOUND NOTHING,

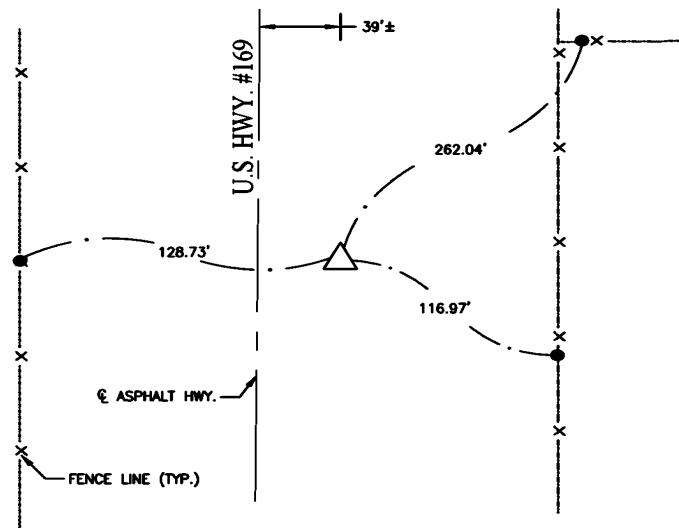
THEREFORE SET 5/8" X 24" REBAR W/ YPC#24655 AT MID POINT BETWEEN FOUND MONUMENT AT N1/4 COR. AND SET

MONUMENT AT CENTER SEC. 19-76-27. CHECKS WITHIN REASON WITH OTHER CORNERS SHOWN ON PLAT.



(SHOW A MINIMUM OF THREE REFERENCE TIES TO DURABLE PHYSICAL OBJECTS, RELEVANT MONUMENTS, AND PHYSICAL CONDITIONS THAT WILL ENABLE RECOVERY OF THE CORNER)

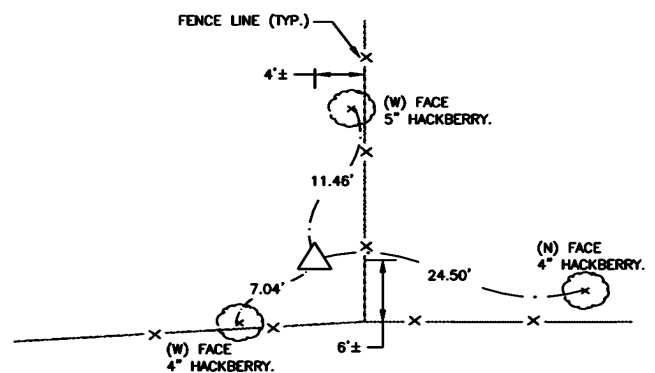
①



ALL TIES = 5/8" REBAR W/ IDOT ALUM CAP.

W1/4 COR. NW1/4 SEC. 19, T-76-N, R-27-W,  
SET 5/8" X 24" REBAR W/ YPC#24655

②



ALL TIES = MAG NAIL W/ NYLON WASHER, UNLESS NOTED.

E1/4 COR. NW1/4 SEC. 19, T-76-N, R-27-W,  
SET 5/8" X 24" REBAR W/ YPC#24655

I hereby certify that this land surveying document was prepared and the related survey work was performed by me or under my direct personal supervision and that I am a duly licensed Professional Land Surveyor under the laws of the State of Iowa.

*Joshua E. Schneider*  
Joshua E. Schneider, P.L.S.  
License number: 24655

12-4-2025

Date

My license renewal date is December 31, 2025  
This page only covered by this seal:



### LIST OF CORNERS TO BE INDEXED

CORNERS	SECTIONS	TOWNSHIP	RANGE
W1/4 COR. NW1/4	19	76	27
E1/4 COR. NW1/4	19	76	27

SURVEY FOR: FARMERS-COLLINS  
DATE: 11-18-25  
PROJECT NO. 6025851