



Prepared by/Return to: Fowler Consulting, LLC
1155 Elmwood Lane, Earlham, Iowa 50072

UNITED STATES PUBLIC LAND
SURVEY CORNER CERTIFICATE

Land Survey Monument situated in
Section 6, Township 77 NORTH, Range
29 WEST, of the Fifth Principal Meridian,
MADISON County, Iowa.

Previously recorded in B-2001 P-1011 (DALLAS)
B-2019 P-530 (MADISON)
in County Recorder's Office.

FOR COUNTY RECORDER'S USE ONLY



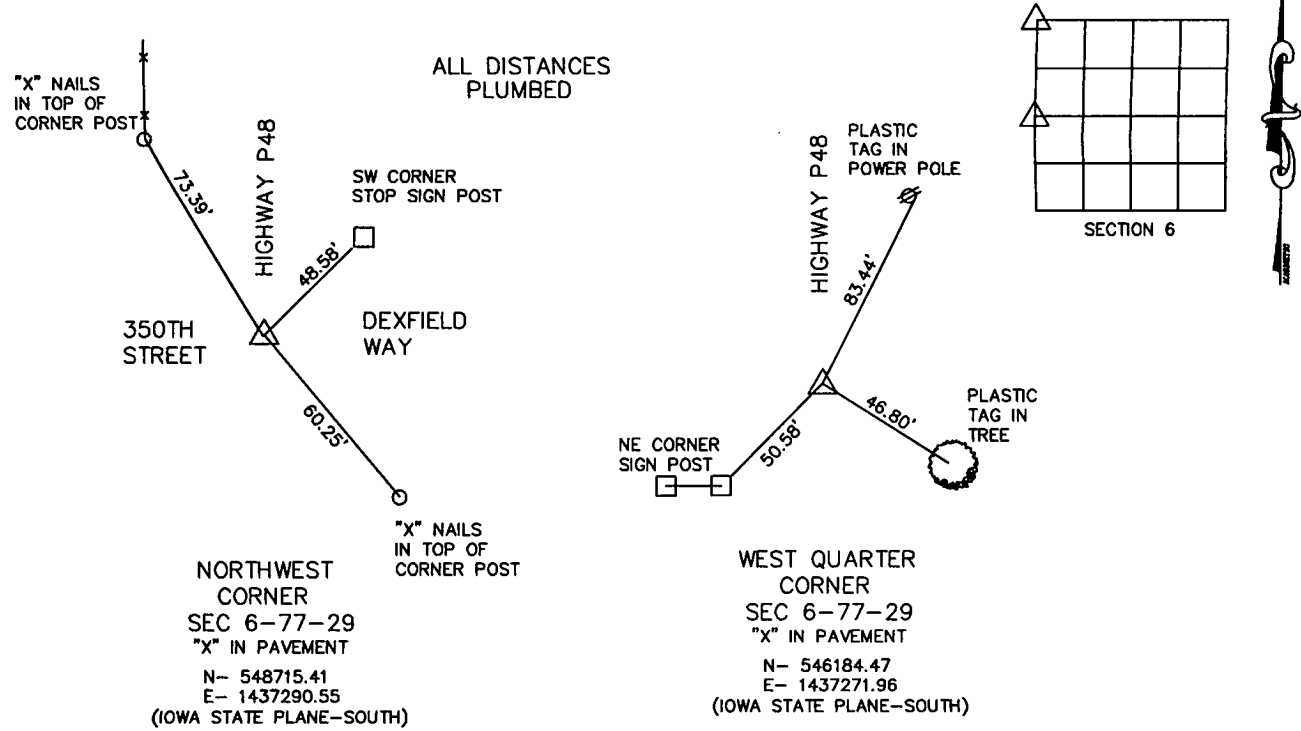
Document 2025 2993
Book 2025 Page 2993 Type 06 043 Pages 1
Date 11/06/2025 Time 12:02:33PM
Rec Amt \$7.00

BRANDY MACUMBER, COUNTY RECORDER
MADISON COUNTY IOWA

Monument Description and Remarks: LOCATED AND VERIFIED CORNERS PRIOR TO A 2025
PAVING PROJECT. RESET AND RETIED CORNERS AS SHOWN FOLLOWING CONSTRUCTION.

PLAN-VIEW

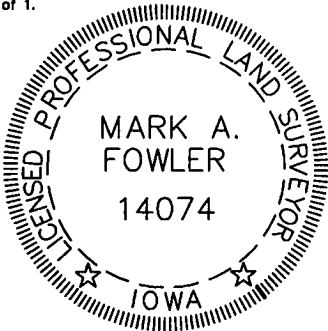
(Show a minimum of three reference ties to durable physical objects, relevant monuments and physical conditions that will enable recovery of the corner.)



I hereby certify that this land surveying document was prepared and the related survey work was performed by me or under my direct personal supervision and that I am a duly licensed land surveyor under the laws of the State of Iowa.

Mark A. Fowler, LS 11-1-2025
License Number 14074 Date

My license renewal date is December 31, 2026
Pages or sheets covered by this seal: 1 of 1.



List corners to be indexed

Corners	Section	Twp	Range
NORTHWEST CORNER	6	77	29
WEST QUARTER CORNER	6	77	29