



Document 2025 1713

Book 2025 Page 1713 Type 06 043 Pages 1

Date 7/07/2025 Time 10:49:48AM

Rec Amt \$7.00

INDX  
ANNO  
SCAN

BRANDY MACUMBER, COUNTY RECORDER  
MADISON COUNTY IOWA

CHEK

PREPARED BY AND RETURN TO: **ABACI CONSULTING INC.**, 3000 SE GRIMES BLVD, STE 800, GRIMES, IA 50111, PH.(515)986-5048

# UNITED STATES PUBLIC LAND SURVEY CORNER CERTIFICATE

OF

LAND SURVEY MONUMENTS SITUATED IN SECTION 13, TOWNSHIP 75N, RANGE 26W, of the Fifth Principal Meridian, MADISON County, Iowa.

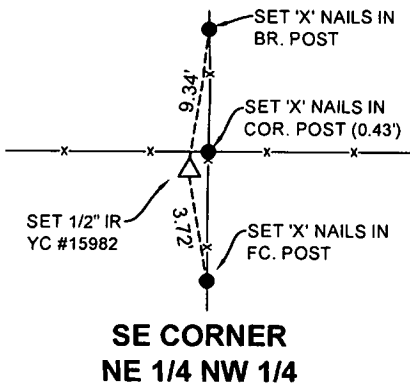
Previously recorded in N/A in County Recorder's Office.

Monument Description & Remarks: SE CORNER NE 1/4 NW 1/4 - SET 1/2" IR YC #15980 AT FENCE CORNER.

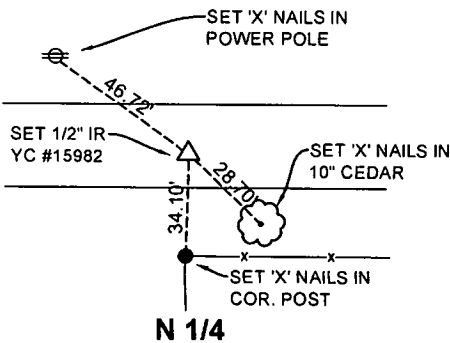
NW CORNER NE 1/4 NW 1/4 - SET 1/2" IR YC #15980 IN LINE W/ FENCE AT THE BASE OF THE CONC. CORNER

N 1/4 - SET 1/2" IR YC #15980 IN CENTER OF ROAD IN LINE W/ FENCE CORNER.

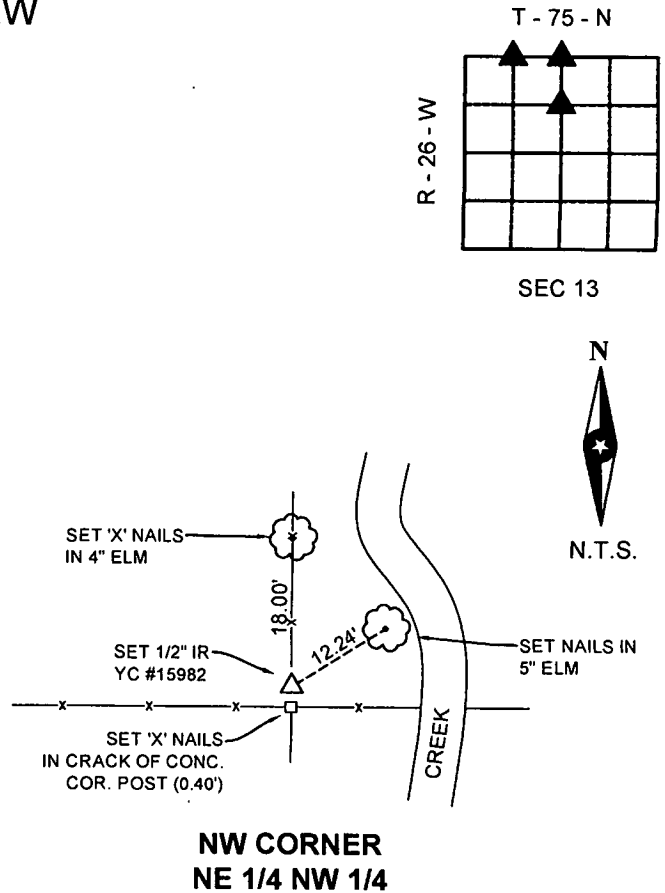
## PLAN VIEW



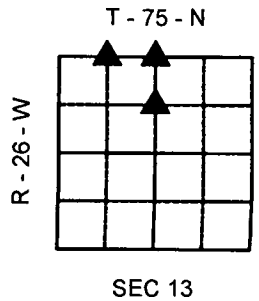
**SE CORNER  
NE 1/4 NW 1/4**



**N 1/4**



**NW CORNER  
NE 1/4 NW 1/4**



**SEC 13**

#25094

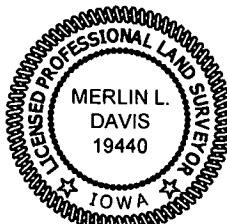
I HEREBY CERTIFY THAT THIS SURVEYING DOCUMENT WAS PREPARED AND THE RELATED WORK WAS PERFORMED BY ME OR UNDER MY DIRECT PERSONAL SUPERVISION AND THAT I AM A DULY LICENSED PROFESSIONAL LAND SURVEYOR UNDER THE LAWS OF THE STATE OF IOWA.

SIGNATURE *Merlin L. Davis* DATE *06/20/2025*

PRINTED OR TYPED NAME: MERLIN L. DAVIS  
IOWA LIC. NO. 19440  
MY LICENSE RENEWAL DATE IS DECEMBER 31, 2026

THIS SHEET ONLY

PAGES COVERED BY THIS SEAL:



### CORNERS TO BE INDEXED

CORNER	SECTION	TWP	RANGE
SE CORNER NE 1/4 NW 1/4	13	75N	26W
NW CORNER NE 1/4 NW 1/4	13	75N	26W
SW CORNER SE 1/4 SW 1/4	13	75N	26W
N 1/4	13	75N	26W
S 1/4	12	75N	26W