



Document 2025 1594

Book 2025 Page 1594 Type 06 043 Pages 1
Date 6/23/2025 Time 11:13:43AM
Rec Amt \$7.00

INDX
ANNO
SCAN

BRANDY MACUMBER, COUNTY RECORDER
MADISON COUNTY IOWA

CHEK

PREPARED BY AND RETURN TO: **ABACI CONSULTING INC.**, 3000 SE GRIMES BLVD, STE 800, GRIMES, IA 50111, PH.(515)986-5048

UNITED STATES PUBLIC LAND SURVEY CORNER CERTIFICATE

OF

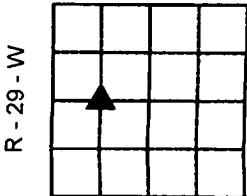
LAND SURVEY MONUMENTS SITUATED IN SECTION 14, TOWNSHIP 75N, RANGE 29W, of the Fifth Principal Meridian, 29W County, Iowa.

Previously recorded in MADISON in County Recorder's Office.

Monument Description & Remarks: NE CORNER NW 1/4 SW 1/4 - SET 1/2" IR OC #19440 AT SPLIT BETWEEN W 1/4 AND CENTER - NO PREVIOUSLY RECORDED TIES.

PLAN VIEW

T - 75 - N

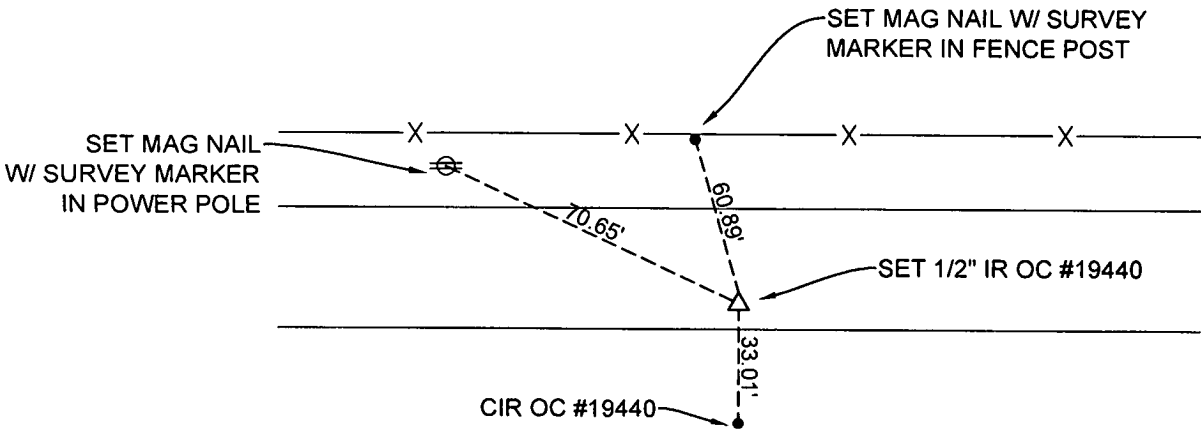


SEC 14

N



N.T.S.



NE CORNER
NW 1/4 SW 1/4

#25092

I HEREBY CERTIFY THAT THIS SURVEYING DOCUMENT WAS PREPARED AND THE RELATED WORK WAS PERFORMED BY ME OR UNDER MY DIRECT PERSONAL SUPERVISION AND THAT I AM A DULY LICENSED PROFESSIONAL LAND SURVEYOR UNDER THE LAWS OF THE STATE OF IOWA.

SIGNATURE Merlin L. Davis DATE 06/26/2025

PRINTED OR TYPED NAME:
IOWA LIC. NO. 19440
MY LICENSE RENEWAL DATE IS DECEMBER 31, 2026

THIS SHEET ONLY

PAGES COVERED BY THIS SEAL:



CORNERS TO BE INDEXED

CORNER	SECTION	TWP	RANGE
NE CORNER NW 1/4 SW 1/4	14	75N	29W