

PREPARED BY // RETURN TO:  
 CHAD ASBERRY // COOPER CRAWFORD & ASSOCIATES, LLC, 475 S. 50TH STREET, WEST DES MOINES, IA 50265, TEL: 515-224-1344

UNITED STATES PUBLIC LAND SURVEY CORNER CERTIFICATE

OF LAND SURVEY MONUMENT(S) SITUATED IN SECTION 3 , TOWNSHIP 76 N , RANGE 28 W , OF THE FIFTH PRINCIPAL MERIDIAN, MADISON COUNTY, IOWA. PREVIOUSLY RECORDED IN BOOK 1 PAGE 51 IN THE COUNTY RECORDER'S OFFICE.

MONUMENT DESCRIPTION AND REMARKS:

- THERE IS NO CERTIFICATE FOR THE CORNER ON FILE WITH THE RECORDER OF THE COUNTY IN WHICH THE CORNER IS LOCATED.
- THE SURVEYOR IN RESPONSIBLE CHARGE OF THE LAND SURVEYING ACCEPTS A CORNER POSITION WHICH DIFFERS FROM THAT SHOWN IN THE PUBLIC RECORDS OF THE COUNTY IN WHICH THE CORNER IS LOCATED.
- THE CORNER MONUMENT IS REPLACED OR MODIFIED IN ANY WAY.
- THE REFERENCE TIES IN AN EXISTING PUBLIC RECORD ARE INCORRECT OR MISSING.

**SE CORNER** - CORNER MONUMENT OF RECORD IS A 1/2" IRON REBAR. FOUND 1/2" REBAR, 0.5' BELOW SURFACE OF GRAVEL ROAD. ALL EXISTING TIES HAVE BEEN REMOVED. VERIFIED FOUND MONUMENT POSITION WITH MULTIPLE SURVEYS LOCATED IN SECTION 3 AND SECTION 10. ACCEPTED FOUND 1/2" REBAR AND SET THREE NEW TIES.

CORNER CERTIFICATE IS BEING PREPARED AS PART OF A SURVEY LOCATED IN SECTION 3-76-28

(SHOW A MINIMUM OF THREE REFERENCE TIES TO DURABLE PHYSICAL OBJECTS, RELEVANT MONUMENTS AND PHYSICAL CONDITIONS THAT WILL ENABLE RECOVERY OF CORNER.)

LEGEND:

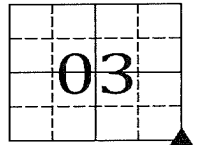
- = SET 5/8" REBAR W/ RED 'CCA CONTROL' CAP
- = SET YELLOW SURVEY TAG
- ✕ = FOUND X-NAILS

DISTANCES ARE MEASURED HORIZONTALLY  
 COORDINATES ARE IOWA STATE PLANE SOUTH ZONE 1402

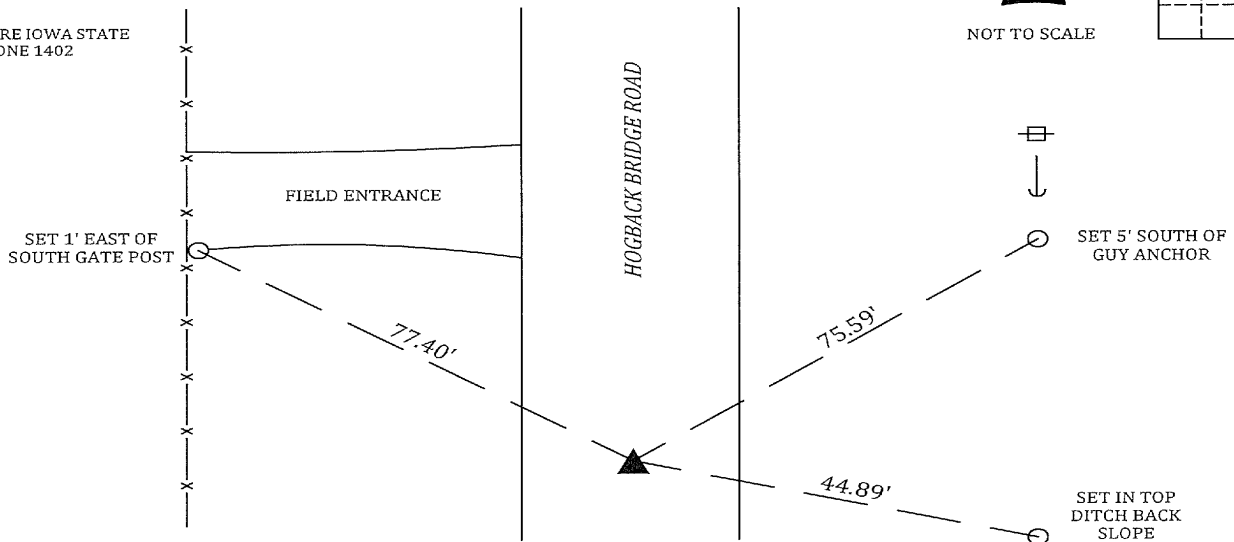
SE CORNER

FOUND 1/2" REBAR

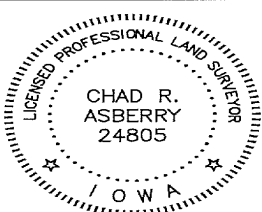
N=511391.61  
 E=1489102.15



NOT TO SCALE



SHEET 1 OF 1



I HEREBY CERTIFY THAT THIS LAND SURVEYING DOCUMENT WAS PREPARED AND THE RELATED SURVEY WORK WAS PERFORMED BY ME OR UNDER MY DIRECT PERSONAL SUPERVISION, AND THAT I AM A DULY LICENSED PROFESSIONAL LAND SURVEYOR UNDER THE LAWS OF THE STATE OF IOWA.

*Chad R. Asberry* 4/30/24  
 CHAD R. ASBERRY, PLS IOWA LICENSE NO. 24805  
 MY LICENSE RENEWAL DATE IS DECEMBER 31, 2025  
 PAGES OR SHEETS COVERED BY THIS SEAL:  
 SHEET 1 OF 1

CORNERS TO BE INDEXED

| CORNER | SECTION | TWP  | RANGE |
|--------|---------|------|-------|
| SE COR | 3       | 76 N | 28 W  |
| SW COR | 2       | 76 N | 28 W  |
| NW COR | 11      | 76 N | 28 W  |
| NE COR | 10      | 76 N | 28 W  |