

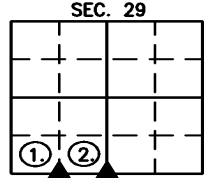


806 Wyoming Ave., Creston, Iowa 50801 Phone: (641)782-4005

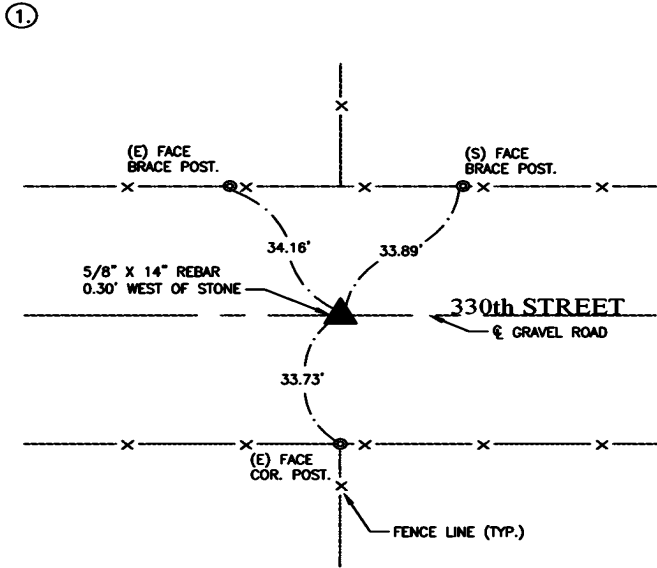
UNITED STATES PUBLIC LAND SURVEY CORNER CERTIFICATE OF

LAND SURVEY MONUMENTS SITUATED IN SECTION 29, TOWNSHIP 74 NORTH, RANGE 28 WEST OF THE 5TH P.M. IN MADISON COUNTY, IOWA.
 PREVIOUSLY RECORDED IN NO CERTIFICATE OF RECORD IN COUNTY RECORDER'S OFFICE.

MONUMENT DESCRIPTION AND REMARKS: ① S1/4 COR. SW1/4 SEC. 29-74-28, FOUND LIMESTONE 4" DEEP OVER IRON PIN, W/ 5/8" X 14" REBAR ON WEST SIDE OF STONE PER NOTES FROM 1911 SURVEY IN OLD COUNTY ENGINEER TIE BOOK, DRILLED 1/2" DIA. HOLE IN TOP OF STONE & SET MAG SPIKE IN HOLE IN STONE.
 ② S1/4 COR. SEC. 29-74-28, FOUND 1/2" X 18" REBAR BENT OVER, ACCEPTED REBAR AND REPLACED W/ 5/8" X 24" REBAR W/ YPC #24655 & TIED OUT CORNER.

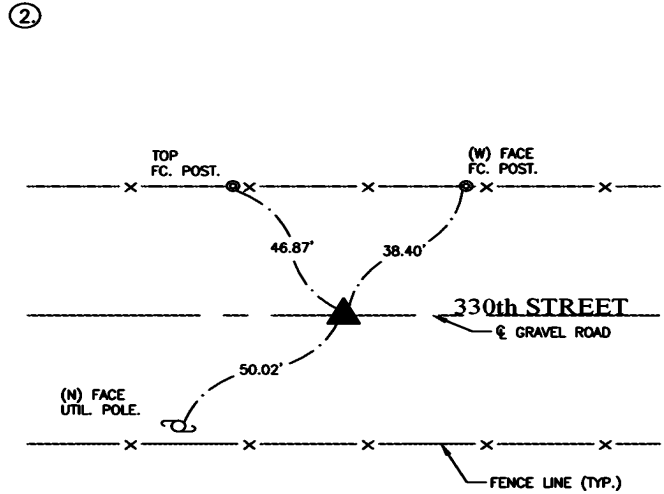


(SHOW A MINIMUM OF THREE REFERENCE TIES TO DURABLE PHYSICAL OBJECTS, RELEVANT MONUMENTS, AND PHYSICAL CONDITIONS THAT WILL ENABLE RECOVERY OF THE CORNER)



ALL TIES = MAG NAIL W/ NYLON WASHER, UNLESS NOTED.

S1/4 COR. SW1/4 SEC. 29, T-74-N, R-28-W,
 SET MAG SPIKE IN LIMESTONE



ALL TIES = MAG NAIL W/ NYLON WASHER, UNLESS NOTED.

S1/4 COR. SEC. 29, T-74-N, R-28-W,
 REPLACED 1/2" REBAR W/ 5/8" X 24" REBAR W/ YPC#24655

I hereby certify that this land surveying document was prepared and the related survey work was performed by me or under my direct personal supervision and that I am a duly licensed Professional Land Surveyor under the laws of the State of Iowa.

Joshua E. Schneider 4-12-2024 Date
 Joshua E. Schneider, P.L.S.
 License number: 24655
 My license renewal date is December 31, 2025
 This page only covered by this seal:



LIST OF CORNERS TO BE INDEXED

CORNERS	SECTIONS	TOWNSHIP	RANGE
S1/4 SW1/4	29	74	28
S1/4	29	74	28

SURVEY FOR: ROBERT BERRY
 DATE: 4-12-24
 PROJECT NO. 6024669