

BK: 2024 PG: 3011
 Recorded: 12/13/2024 at 8:18:38.0 AM
 Pages 1
 County Recording Fee: \$7.00
 Iowa E-Filing Fee: \$3.13
 Combined Fee: \$10.13
 Revenue Tax: \$0.00
 BRANDY L. MACUMBER, RECORDER
 Madison County, Iowa

PREPARED BY: CRAIG S. BOLDMAN 521 WEST GREEN STREET, WINTERSET, IA 50273 PHONE (515)462-9242

UNITED STATES PUBLIC LAND SURVEY CORNER CERTIFICATE

Land Survey Monuments situated in Section 23, Township 76, Range 26, the Fifth Principal Meridian, Madison County, Iowa.
 Previously recorded in None Found in County Recorder's Office

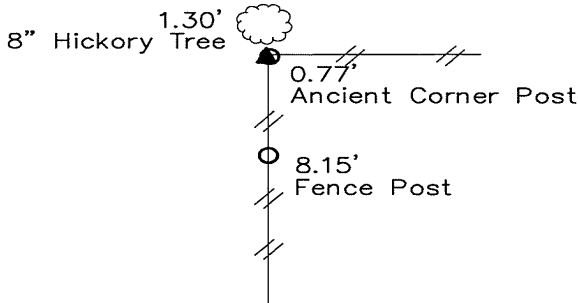
(Show reason for preparing this certificate, the evidence and detailed procedures used in establishing the corner positions & monumentation found or placed)

Monument Description and Remarks:

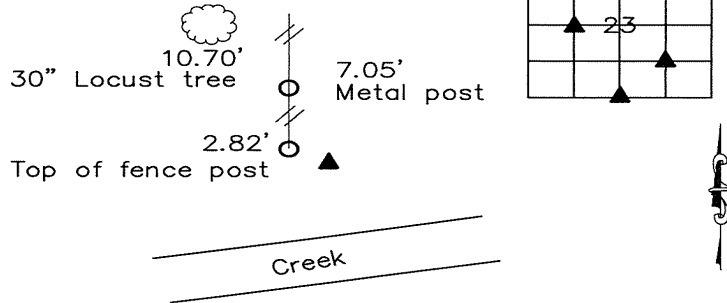
- NW Corner – SW 1/4 NW 1/4: Set 1/2" iron rod with orange plastic cap at fence corner post.
- S 1/4 Corner – Set 1/2" rebar with orange cap by ancient fence post. Found 5/8" rebar 7.5' SE.
- N 1/4 Corner – Found 1/2" iron rod near post laying on side.
- NE Corner SW 1/4 SE 1/4 – Set 1/2" capped iron rod by traversing S 1/2 Section 23.

PLAN-VIEW

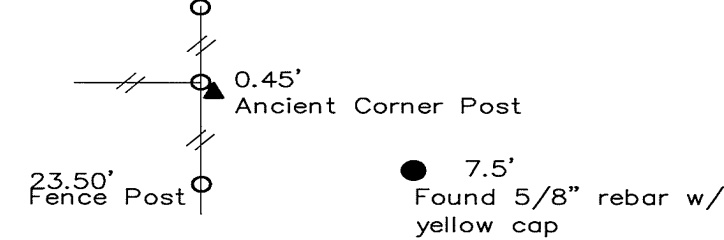
NW Corner – NE 1/4 SW 1/4



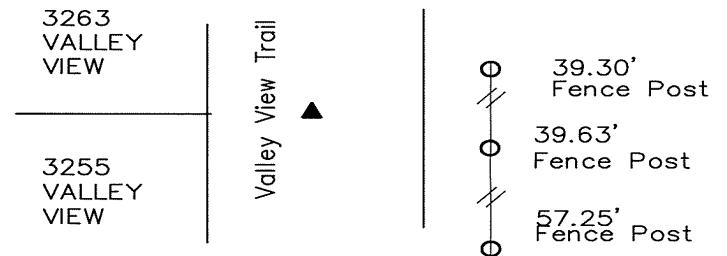
NE Corner – SW 1/4 SE 1/4



S 1/4 Corner



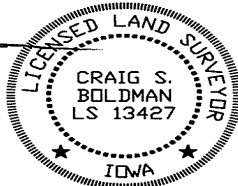
N 1/4 Corner



NOTE: ALL TIES TO ORANGE PLASTIC SURVEY MARKERS (SM) UNLESS NOTED

I HEREBY CERTIFY THAT THIS LAND SURVEYING DOCUMENT WAS PREPARED AND THE RELATED SURVEY WORK WAS PERFORMED BY ME OR UNDER MY DIRECT PERSONAL SUPERVISION AND THAT I AM A DULY LICENSED LAND SURVEYOR UNDER THE LAWS OF THE STATE OF IOWA.

SIGNATURE: Craig S. Boldman
 CRAIG S. BOLDMAN
 DATE: 12/12/24 LICENSE NO 13427
 MY RENEWAL DATE IS DECEMBER 31, 2026
 COVERS SHEETS ALL



CORNERS TO BE INDEXED

Corners	Section	Township	Range
NW Cor SW 1/4 NW 1/4	23	76	26
S 1/4 Corner	23	76	26
N 1/4 Corner	26	76	26
S 1/4 Corner	14	76	26
N 1/4 Corner	23	76	26
NE Cor –	23	76	26
SW 1/4 SE 1/4			

Project No. 24044