

PREPARED BY & RETURN TO: MICHAEL A. BROONER
 CIVIL DESIGN ADVANTAGE, 4121 NW URBAN DALE DRIVE, URBAN DALE, IOWA 50322 PH: 515-369-4400 FAX: 515-369-4410

UNITED STATES PUBLIC LAND SURVEY CORNER CERTIFICATE OF

Land Survey Monuments situated in Section 01, Township 77, Range 26, of the
 Fifth Principal Meridian, MADISON County, Iowa.
 Previously recorded in BK 2003 PG 45 in County Recorder's Office.

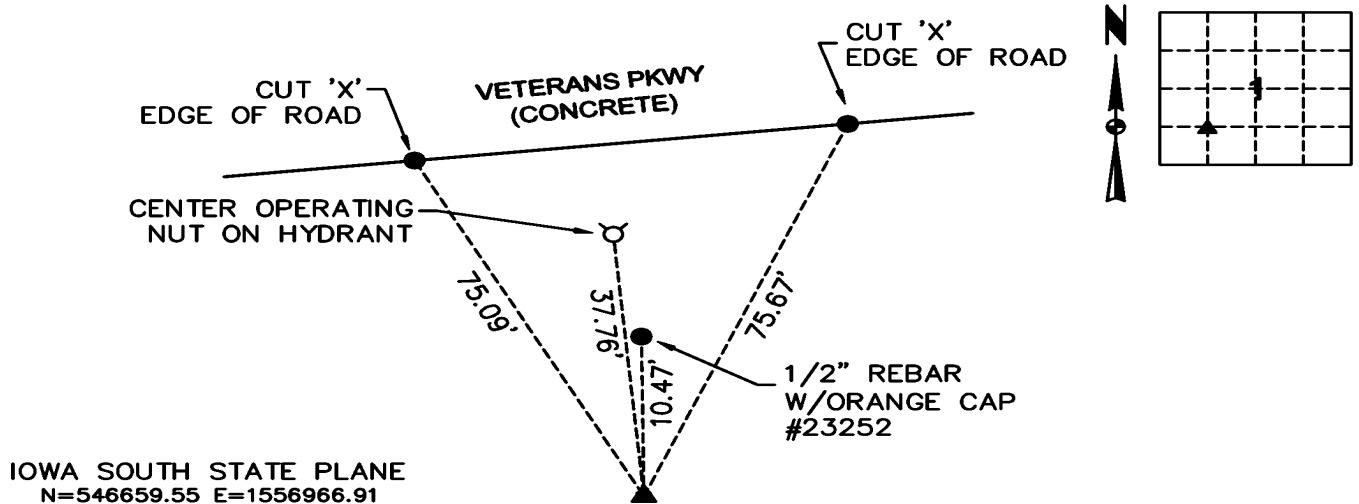
Monument Description and Remarks:

- THERE IS NO CERTIFICATE FOR THE CORNER ON FILE WITH THE RECORDER OF THE COUNTY IN WHICH THE CORNER IS LOCATED.
- THE SURVEYOR IN RESPONSIBLE CHARGE OF THE LAND SURVEYING ACCEPTS A CORNER POSITION WHICH DIFFERS FROM THAT SHOWN IN THE PUBLIC RECORDS OF THE COUNTY IN WHICH THE CORNER IS LOCATED.
- THE CORNER MONUMENT IS REPLACED OR MODIFIED IN ANY WAY.
- THE REFERENCE TIES IN AN EXISTING PUBLIC RECORD ARE INCORRECT OR MISSING.

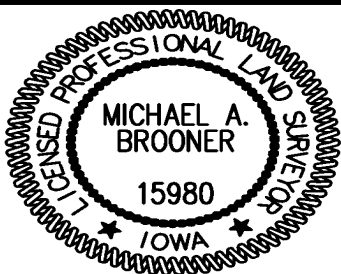
**NORTHEAST CORNER OF THE SOUTHWEST QUARTER OF THE SOUTHWEST QUARTER OF SECTION
 1-T77N-R26W. SET 1/2" REBAR WITH YELLOW PLASTIC CAP #15980 AT INTERSECTION OF OPPOSITE SECTION
 CORNERS. USED FOR PLAT OF SURVEY.**

PLAN VIEW

(Show a minimum of three reference ties to durable physical objects, relevant monuments and physical conditions that will enable recovery of the corner.)



**NE CORNER SW1/4, SW1/4
 SECTION 01-77-26
 SET 1/2" REBAR W/YELLOW CAP #15980**



I HEREBY CERTIFY THAT THIS LAND SURVEYING DOCUMENT WAS PREPARED AND THE RELATED SURVEYING WORK WAS PERFORMED BY ME OR UNDER MY DIRECT SUPERVISION AND THAT I AM A DULY LICENSED LAND SURVEYOR UNDER THE LAWS OF THE STATE OF IOWA.

Michael Brooner

1-24-2024

MICHAEL A. BROONER, P.L.S.

DATE

LICENSE NUMBER 15980

MY LICENSE RENEWAL DATE IS DECEMBER 31, 2024.

CERTIFICATION COVERS THIS SHEET ONLY:

List Corners to be Indexed			
Corners	Section	Twp	Range
NE COR	01	77	26
SW1/4 SW1/4			