

PREPARED BY // RETURN TO:  
 CHAD ASBERRY // COOPER CRAWFORD & ASSOCIATES, LLC, 475 S. 50TH STREET, WEST DES MOINES, IA 50265, TEL: 515-224-1344

UNITED STATES PUBLIC LAND SURVEY CORNER CERTIFICATE

OF LAND SURVEY MONUMENT(S) SITUATED IN SECTION 3, TOWNSHIP 76 N, RANGE 28 W, OF THE FIFTH PRINCIPAL MERIDIAN, MADISON COUNTY, IOWA. PREVIOUSLY RECORDED IN N/A IN THE COUNTY RECORDER'S OFFICE.

MONUMENT DESCRIPTION AND REMARKS:

- THERE IS NO CERTIFICATE FOR THE CORNER ON FILE WITH THE RECORDER OF THE COUNTY IN WHICH THE CORNER IS LOCATED.
- THE SURVEYOR IN RESPONSIBLE CHARGE OF THE LAND SURVEYING ACCEPTS A CORNER POSITION WHICH DIFFERS FROM THAT SHOWN IN THE PUBLIC RECORDS OF THE COUNTY IN WHICH THE CORNER IS LOCATED.
- THE CORNER MONUMENT IS REPLACED OR MODIFIED IN ANY WAY.
- THE REFERENCE TIES IN AN EXISTING PUBLIC RECORD ARE INCORRECT OR MISSING.

SE COR, SW 1/4 SW 1/4 - NO RECORD OF CORNER FOUND IN THE COUNTY RECORDER'S OFFICE. SEARCHED AREA AROUND THE MID POINT OF A LINE BETWEEN THE SOUTH 1/4 AND SW CORNER OF SECTION 3 BUT FOUND NOTHING. SAID SECTION LINE CLOSELY MATCHES THE STANDARD QUARTER MILE DISTANCE, WITHIN REASON, TO THE CENTER OF THE RIGHT OF WAY OF IRONWOOD TRAIL TO THE NORTH. ACCEPTED THE MID POINT LOCATION AND SET A 5/8" REBAR W/ PINK CAP #24805. TIED TO SURROUNDING MONUMENTS DUE TO HEAVY BRUSH AND RAVINE.

CORNER CERTIFICATE IS BEING PREPARED AS PART OF A SURVEY LOCATED IN SECTION 3-76-28.

(SHOW A MINIMUM OF THREE REFERENCE TIES TO DURABLE PHYSICAL OBJECTS, RELEVANT MONUMENTS AND PHYSICAL CONDITIONS THAT WILL ENABLE RECOVERY OF CORNER.)

LEGEND:

- = SET 5/8" REBAR W/ RED 'CCA CONTROL' CAP
- = SET YELLOW SURVEY TAG
- × = SET X-NAILS IN FENCE POST
- ▲ = 5/8" REBAR W/ PINK CAP #24805

DISTANCES ARE MEASURED HORIZONTALLY  
 COORDINATES ARE IOWA STATE PLANE SOUTH ZONE 1402

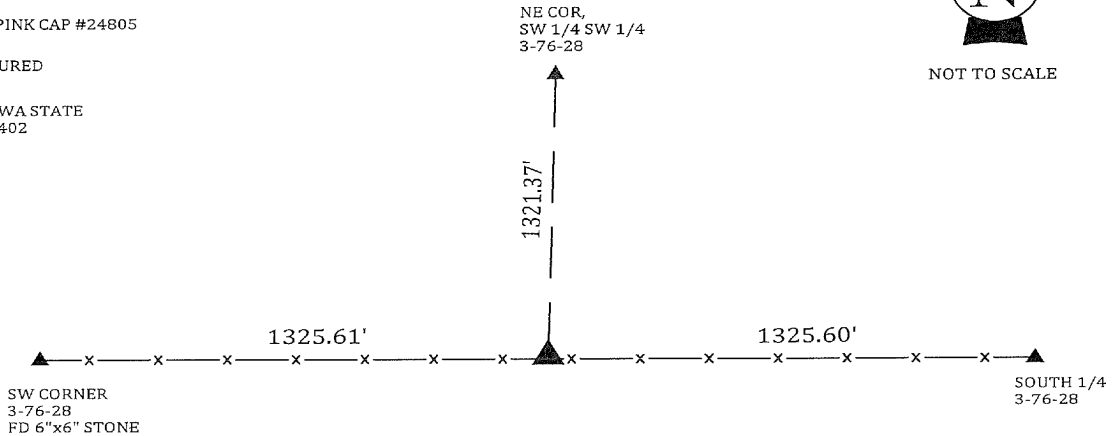
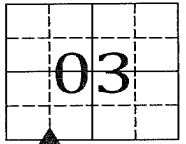
SE COR, SW 1/4 SW 1/4

N=511460.84  
 E=1485125.94

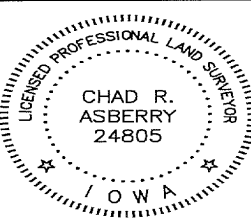
SET 5/8" REBAR W/ PINK CAP #24805



NOT TO SCALE



SHEET 1 OF 1



I HEREBY CERTIFY THAT THIS LAND SURVEYING DOCUMENT WAS PREPARED AND THE RELATED SURVEY WORK WAS PERFORMED BY ME OR UNDER MY DIRECT PERSONAL SUPERVISION, AND THAT I AM A DULY LICENSED PROFESSIONAL LAND SURVEYOR UNDER THE LAWS OF THE STATE OF IOWA.

CHAD R. ASBERRY, PLS IOWA LICENSE NO. 24805  
 MY LICENSE RENEWAL DATE IS DECEMBER 31, 2025  
 PAGES OR SHEETS COVERED BY THIS SEAL:  
 SHEET 1 OF 1

CORNERS TO BE INDEXED			
CORNER	SECTION	TWP	RANGE
SE COR, SW 1/4 SW 1/4	3	76 N	28 W