

PREPARED BY // RETURN TO:
 CHAD ASBERRY // COOPER CRAWFORD & ASSOCIATES, LLC, 475 S. 50TH STREET, WEST DES MOINES, IA 50265, TEL: 515-224-1344

UNITED STATES PUBLIC LAND SURVEY CORNER CERTIFICATE

OF LAND SURVEY MONUMENT(S) SITUATED IN SECTION 3, TOWNSHIP 76 N, RANGE 28 W, OF THE FIFTH PRINCIPAL MERIDIAN, MADISON COUNTY, IOWA. PREVIOUSLY RECORDED IN N/A IN THE COUNTY RECORDER'S OFFICE.

MONUMENT DESCRIPTION AND REMARKS:

- THERE IS NO CERTIFICATE FOR THE CORNER ON FILE WITH THE RECORDER OF THE COUNTY IN WHICH THE CORNER IS LOCATED.
- THE SURVEYOR IN RESPONSIBLE CHARGE OF THE LAND SURVEYING ACCEPTS A CORNER POSITION WHICH DIFFERS FROM THAT SHOWN IN THE PUBLIC RECORDS OF THE COUNTY IN WHICH THE CORNER IS LOCATED.
- THE CORNER MONUMENT IS REPLACED OR MODIFIED IN ANY WAY.
- THE REFERENCE TIES IN AN EXISTING PUBLIC RECORD ARE INCORRECT OR MISSING.

SOUTH 1/4 - NO RECORD OF CORNER FOUND IN THE COUNTY RECORDER'S OFFICE. SEARCHED AREA AROUND THE MID POINT OF A LINE BETWEEN THE SE AND SW CORNERS OF SECTION 3 AND AROUND THE AREA OF THE SAME MID POINT AT AN EXISTING EAST-WEST FENCE LINE BUT FOUND NOTHING. SAID FENCE LINES CLOSELY MATCHES THE STANDARD QUARTER MILE DISTANCE, WITHIN REASON, TO THE CENTER OF THE RIGHT OF WAY OF IRONWOOD TRAIL TO THE NORTH. ACCEPTED THE MID POINT LOCATION AT THE FENCE LINE AND SET A 5/8" REBAR W/ PINK CAP #24805. TIED TO SURROUNDING SECTION CORNERS DUE TO HEAVY BRUSH AND ROTTEN FENCE POSTS.

CORNER CERTIFICATE IS BEING PREPARED AS PART OF A SURVEY LOCATED IN SECTION 3-76-28.

(SHOW A MINIMUM OF THREE REFERENCE TIES TO DURABLE PHYSICAL OBJECTS, RELEVANT MONUMENTS AND PHYSICAL CONDITIONS THAT WILL ENABLE RECOVERY OF CORNER.)

LEGEND:

- = SET 5/8" REBAR W/ RED 'CCA CONTROL' CAP
- = SET YELLOW SURVEY TAG
- × = SET X-NAILS IN FENCE POST
- ▲ = 5/8" REBAR W/ PINK CAP #24805

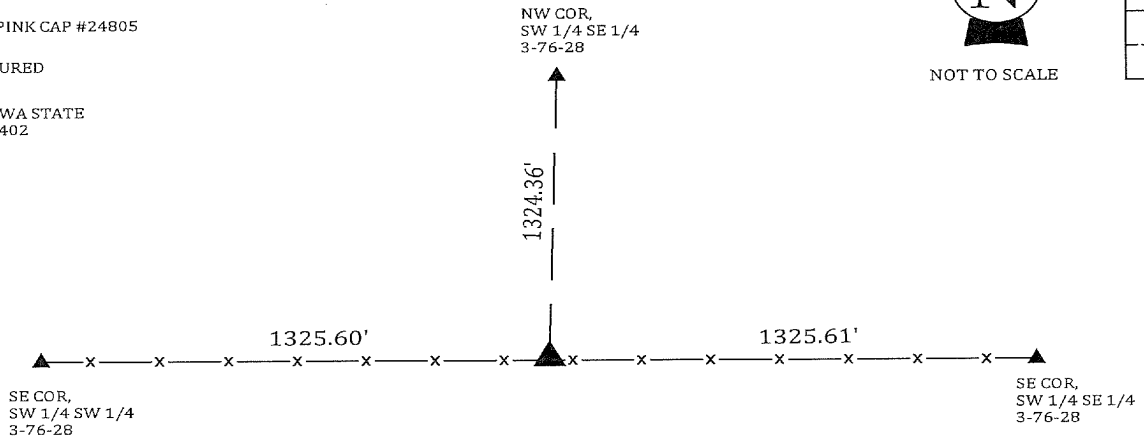
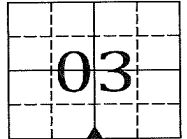
DISTANCES ARE MEASURED HORIZONTALLY
 COORDINATES ARE IOWA STATE PLANE SOUTH ZONE 1402

SOUTH 1/4
 SET 5/8" REBAR W/ PINK CAP #24805

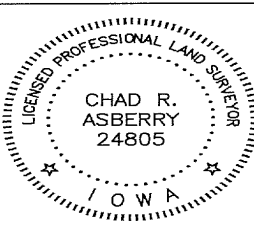
N=511435.98
 E=1486451.31



NOT TO SCALE



SHEET 1 OF 1



I HEREBY CERTIFY THAT THIS LAND SURVEYING DOCUMENT WAS PREPARED AND THE RELATED SURVEY WORK WAS PERFORMED BY ME OR UNDER MY DIRECT PERSONAL SUPERVISION, AND THAT I AM A DULY LICENSED PROFESSIONAL LAND SURVEYOR UNDER THE LAWS OF THE STATE OF IOWA.

Chad R. Asberry 5/10/24
 CHAD R. ASBERRY, PLS - IOWA LICENSE NO. 24805
 MY LICENSE RENEWAL DATE IS DECEMBER 31, 2025
 PAGES OR SHEETS COVERED BY THIS SEAL:
 SHEET 1 OF 1

| CORNERS TO BE INDEXED | | | |
|-----------------------|---------|------|-------|
| CORNER | SECTION | TWP | RANGE |
| SOUTH 1/4 | 3 | 76 N | 28 W |