

PREPARED BY // RETURN TO:
 CHAD ASBERRY // COOPER CRAWFORD & ASSOCIATES, LLC, 475 S. 50TH STREET, WEST DES MOINES, IA 50265, TEL: 515-224-1344

UNITED STATES PUBLIC LAND SURVEY CORNER CERTIFICATE

OF LAND SURVEY MONUMENT(S) SITUATED IN SECTION 3 , TOWNSHIP 76 N , RANGE 28 W , OF THE FIFTH PRINCIPAL MERIDIAN, MADISON COUNTY, IOWA. PREVIOUSLY RECORDED IN N/A IN THE COUNTY RECORDER'S OFFICE.

MONUMENT DESCRIPTION AND REMARKS:

- THERE IS NO CERTIFICATE FOR THE CORNER ON FILE WITH THE RECORDER OF THE COUNTY IN WHICH THE CORNER IS LOCATED.
- THE SURVEYOR IN RESPONSIBLE CHARGE OF THE LAND SURVEYING ACCEPTS A CORNER POSITION WHICH DIFFERS FROM THAT SHOWN IN THE PUBLIC RECORDS OF THE COUNTY IN WHICH THE CORNER IS LOCATED.
- THE CORNER MONUMENT IS REPLACED OR MODIFIED IN ANY WAY.
- THE REFERENCE TIES IN AN EXISTING PUBLIC RECORD ARE INCORRECT OR MISSING.

NW COR, SW 1/4 SE 1/4 - NO RECORD OF CORNER FOUND IN THE COUNTY RECORDER'S OFFICE. SEARCHED AREA AROUND THE INTERSECTION OF THE CENTER LINE OF THE EXISTING EAST-WEST ROAD AND THE EAST LINE OF THE SOUTHWEST QUARTER BUT FOUND NOTHING. ESTABLISHED A POINT ON THE SAID EAST LINE, 33.00 FEET NORTH OF THE SOUTH RIGHT OF WAY FENCE OF THE EAST-WEST ROAD. ACCEPTED CORNER LOCATION AND SET A 5/8" REBAR W/ PINK CAP #24805. SET THREE NEW TIES.

CORNER CERTIFICATE IS BEING PREPARED AS PART OF A SURVEY LOCATED IN SECTION 3-76-28.

(SHOW A MINIMUM OF THREE REFERENCE TIES TO DURABLE PHYSICAL OBJECTS, RELEVANT MONUMENTS AND PHYSICAL CONDITIONS THAT WILL ENABLE RECOVERY OF CORNER.)

LEGEND:

- = SET 5/8" REBAR W/ RED 'CCA CONTROL' CAP
- = SET YELLOW SURVEY TAG
- ✕ = SET X-NAILS IN FENCE POST

DISTANCES ARE MEASURED HORIZONTALLY
 COORDINATES ARE IOWA STATE PLANE SOUTH ZONE 1402

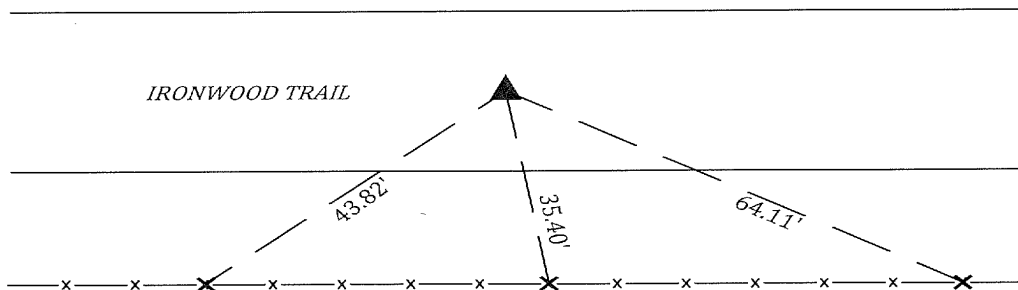
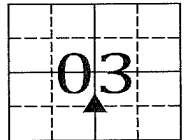
NW COR, SW 1/4 SE 1/4

SET 5/8" REBAR W/ PINK CAP #24805

N=512760.27
 E=1486465.09



NOT TO SCALE



SHEET 1 OF 1



I HEREBY CERTIFY THAT THIS LAND SURVEYING DOCUMENT WAS PREPARED AND THE RELATED SURVEY WORK WAS PERFORMED BY ME OR UNDER MY DIRECT PERSONAL SUPERVISION, AND THAT I AM A DULY LICENSED PROFESSIONAL LAND SURVEYOR UNDER THE LAWS OF THE STATE OF IOWA.

Chad R. Asberry 5/10/24

CHAD R. ASBERRY, PLS - IOWA LICENSE NO. 24805
 MY LICENSE RENEWAL DATE IS DECEMBER 31, 2025

PAGES OR SHEETS COVERED BY THIS SEAL:
 SHEET 1 OF 1

CORNER	CORNERS TO BE INDEXED		
	SECTION	TWP	RANGE
NW COR, SW 1/4 SE 1/4	3	76 N	28 W