

RETURN TO: DANIELS LAND SURVEYING, 22470 18TH LANE, NEW VIRGINIA IA 50210 (515) 577-2583

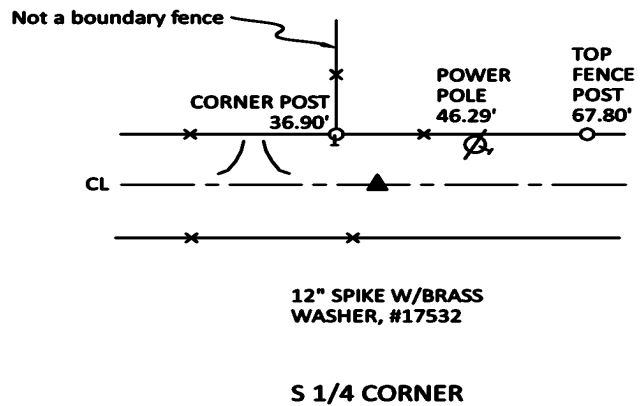
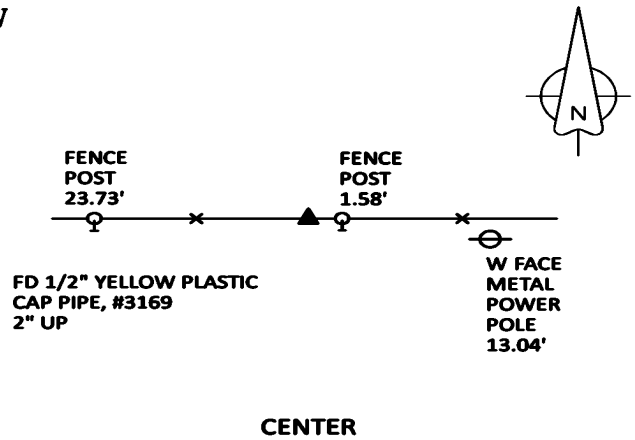
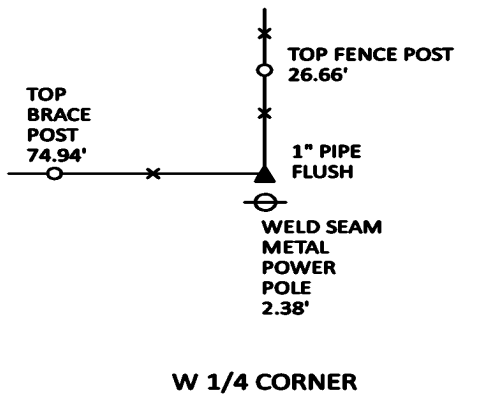
UNITED STATES PUBLIC LAND CORNER CERTIFICATE

Land Survey Monuments in Section 14, Township 77 North, Range 26 West of the 5th P.M., Madison County, Iowa.
 Previously recorded in CENTER - Bk 2007 Pg 623, Others - n.a. in the County Recorder's Office

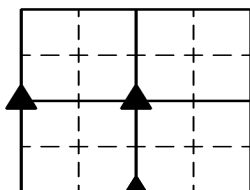
MONUMENT DESCRIPTIONS AND REMARKS:

CENTER - Found recorded monument but all ties were gone. Retied same.
W 1/4 CORNER - Found 1" pipe near fence corner and as shown on adjacent survey. Accepted position.
S 1/4 CORNER - Set at intersection of line from SE and SW corners with line from N 1/4 Corner through Center of 14.

PLAN VIEW

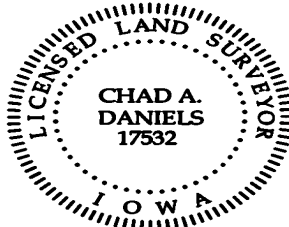


ALL TIES TO RING SHANK NAILS UNLESS NOTED



Section Number:
14

Project Number: 2038



I hereby certify that this surveying document was prepared by me and the related survey work was performed by me or under my direct personal supervision and that I am a duly licensed Professional Land Surveyor under the laws of the State of Iowa.
 Signed *Chad A. Daniels* 20 APR 23
 Chad A. Daniels Date
 Iowa License No. 17532
 My license renewal date is 12-31-2024