



Document 2023 3170

Book 2023 Page 3170 Type 06 043 Pages 1

Date 12/26/2023 Time 10:24:34AM

Rec Amt \$7.00

INDX

ANNO

SCAN

BRANDY MACUMBER, COUNTY RECORDER  
MADISON COUNTY IOWA

CHEK

PREPARED BY AND RETURN TO: **ABACI CONSULTING INC.**, 3000 SE GRIMES BLVD, STE 800, GRIMES, IA 50111, PH.(515)986-5048

# UNITED STATES PUBLIC LAND SURVEY CORNER CERTIFICATE

OF

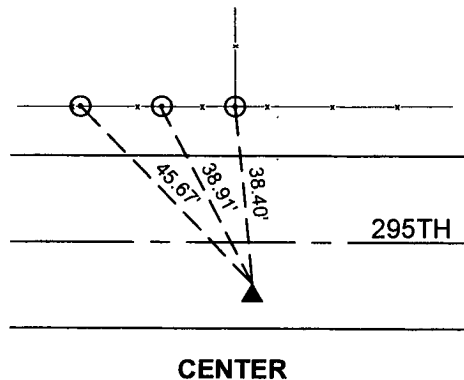
LAND SURVEY MONUMENTS SITUATED IN SECTION 12, TOWNSHIP 74, RANGE 27, of the Fifth Principal Meridian, MADISON County, Iowa.

Previously recorded in NA in County Recorder's Office.

Monument Description & Remarks: NE CORNER SE 1/4 SE 1/4 - SET 1/2 IRON ROD CAP #19440 4" DEEP - NO PREVIOUS RECORDED TIES - SET BETWEEN SECTION AND EAST 1/4 SPLIT.

CENTER - FOUND 1/2" IR YC #6808 2" DEEP - USED ON SURVEY RECORDED IN BK 2021 - PG 2174 OF THE MADISON COUNTY RECORDER.

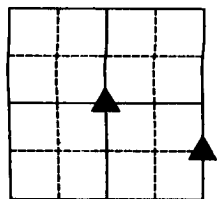
## PLAN VIEW



NOTE: ALL TIES  
FND PK NAIL IN  
TOP POSTS

T - 74 - N

R - 27 - W

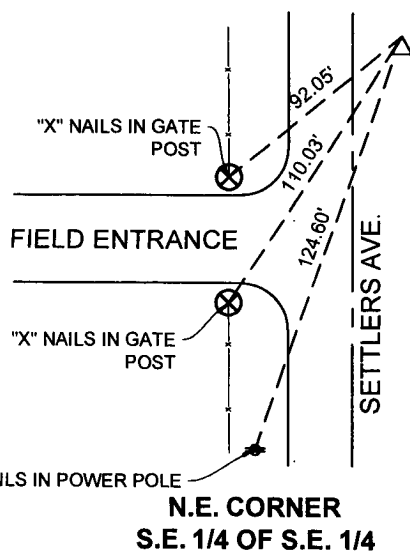


SEC 12

N



N.T.S.



N.E. CORNER  
S.E. 1/4 OF S.E. 1/4

#23232

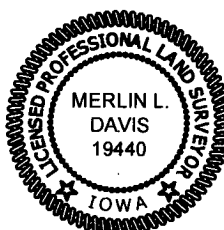
I HEREBY CERTIFY THAT THIS SURVEYING DOCUMENT WAS PREPARED AND THE RELATED WORK WAS PERFORMED BY ME OR UNDER MY DIRECT PERSONAL SUPERVISION AND THAT I AM A DULY LICENSED PROFESSIONAL LAND SURVEYOR UNDER THE LAWS OF THE STATE OF IOWA.

*Merlin L. Davis* 12/22/23  
SIGNATURE DATE

MERLIN L. DAVIS

PRINTED OR TYPED NAME:  
IOWA LIC. NO. 19440  
MY LICENSE RENEWAL DATE IS DECEMBER 31, 2024

THIS SHEET ONLY



## CORNERS TO BE INDEXED

CORNER	SECTION	TWP	RANGE
CENTER	12	74	27
NE 1/4 SE 1/4 OF SE 1/4	12	74	27
NW 1/4 SW 1/4 OF SW 1/4	7	74	26