

BK: 2023 PG: 2981
 Recorded: 12/8/2023 at 9:34:00.0 AM
 Pages 1
 County Recording Fee: \$7.00
 Iowa E-Filing Fee: \$3.13
 Combined Fee: \$10.13
 Revenue Tax:
 BRANDY L. MACUMBER, RECORDER
 Madison County, Iowa

PREPARED BY & RETURN TO TERRY COADY, SNYDER & ASSOCIATES, INC. 2727 SW SNYDER BLVD, ANKENY, IOWA 50023 (515) 964-2020

UNITED STATES PUBLIC LAND SURVEY CORNER CERTIFICATE OF

Land Survey Monuments situated in Section 27, Township 77, Range 28, West of the Fifth Principal Meridian, MADISON County, Iowa. Previously recorded in Book 1, Page 13 in County Recorder's Office.
 (book, page, document number, ect.)

(Show reason for preparing this certificate, the evidence and detailed procedures used in establishing the corner positions and monumentation found or placed.)

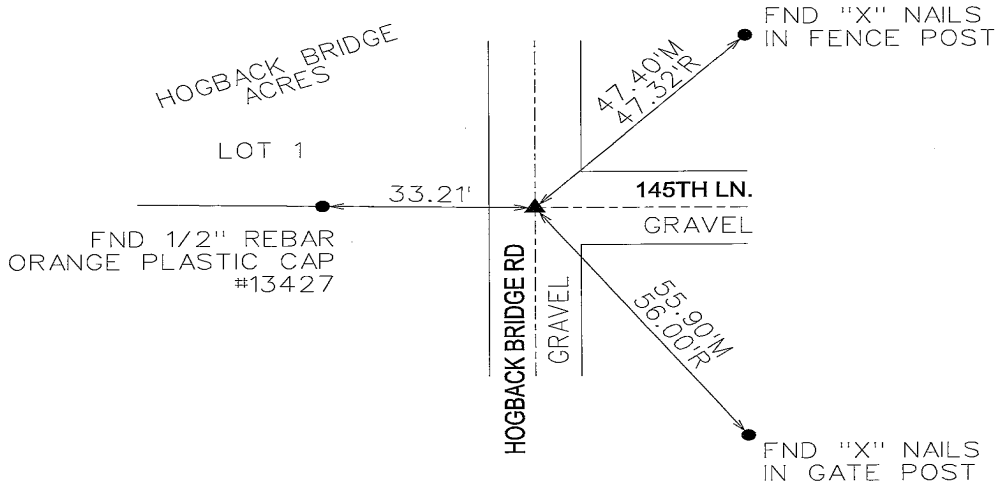
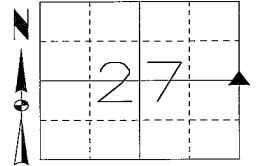
Monument Description and Remarks:

THE EXISTING CORNER CERTIFICATE RECORDED IN BOOK 1, PAGE 13 OF THE MADISON COUNTY RECORDER'S OFFICE INDICATED THAT THE EAST 1/4 CORNER IS MONUMENTED WITH A FROST NAIL. SEARCHED AREA USING METAL DETECTOR AND EXISTING TIES AND FOUND 5/8" REBAR WITH BLUE PLASTIC CAP #19968. CHECKED MONUMENT WITH REMAINING TIES AND ACCEPTED FOUND MONUMENT AS THE SECTION CORNER. THIS CERTIFICATE IS BEING PREPARED BECAUSE THERE ARE NO LONGER THREE VALID TIES OF RECORD AND THE MONUMENT HAS CHANGED.

Plan-View

(Show a minimum of three reference ties to durable physical objects, relevant monuments and physical conditions that will enable recovery of the corner.)

E 1/4 CORNER
 FND 5/8" REBAR
 BLUE PLASTIC CAP #19968
 4" DEEP



NOTE: ALL DISTANCES MEASURED HORIZONTAL UNLESS OTHERWISE NOTED.

LICENSED PROFESSIONAL LAND SURVEYOR

TERRY COADY

18643

IOWA

I hereby certify that this land surveying document was prepared and the related survey work was performed by me or under my direct personal supervision and that I am a duly licensed Professional Land Surveyor under the laws of the State of Iowa.

Terry Coady 12-8-2023

Terry Coady, PLS Date

License Number 18643

My License Renewal Date is December 31, 2023

Pages or sheets covered by this seal:
SHEET 1 OF 1

Corners	Section	Twp	Range
E 1/4	27	77	28
W 1/4	26	77	28

TECH: JDP

PN: 123.0772

DATE: 12-07-23