

BK: 2023 PG: 2470
 Recorded: 10/6/2023 at 1:30:20.0 PM
 Pages 1
 County Recording Fee: \$7.00
 Iowa E-Filing Fee: \$3.13
 Combined Fee: \$10.13
 Revenue Tax:
 BRANDY L. MACUMBER, RECORDER
 Madison County, Iowa

PREPARED BY: CRAIG S. BOLDMAN 521 WEST GREEN STREET WINTERSSET, IA 50273 PHONE (515)462-9242
 UNITED STATES PUBLIC LAND SURVEY CORNER CERTIFICATE

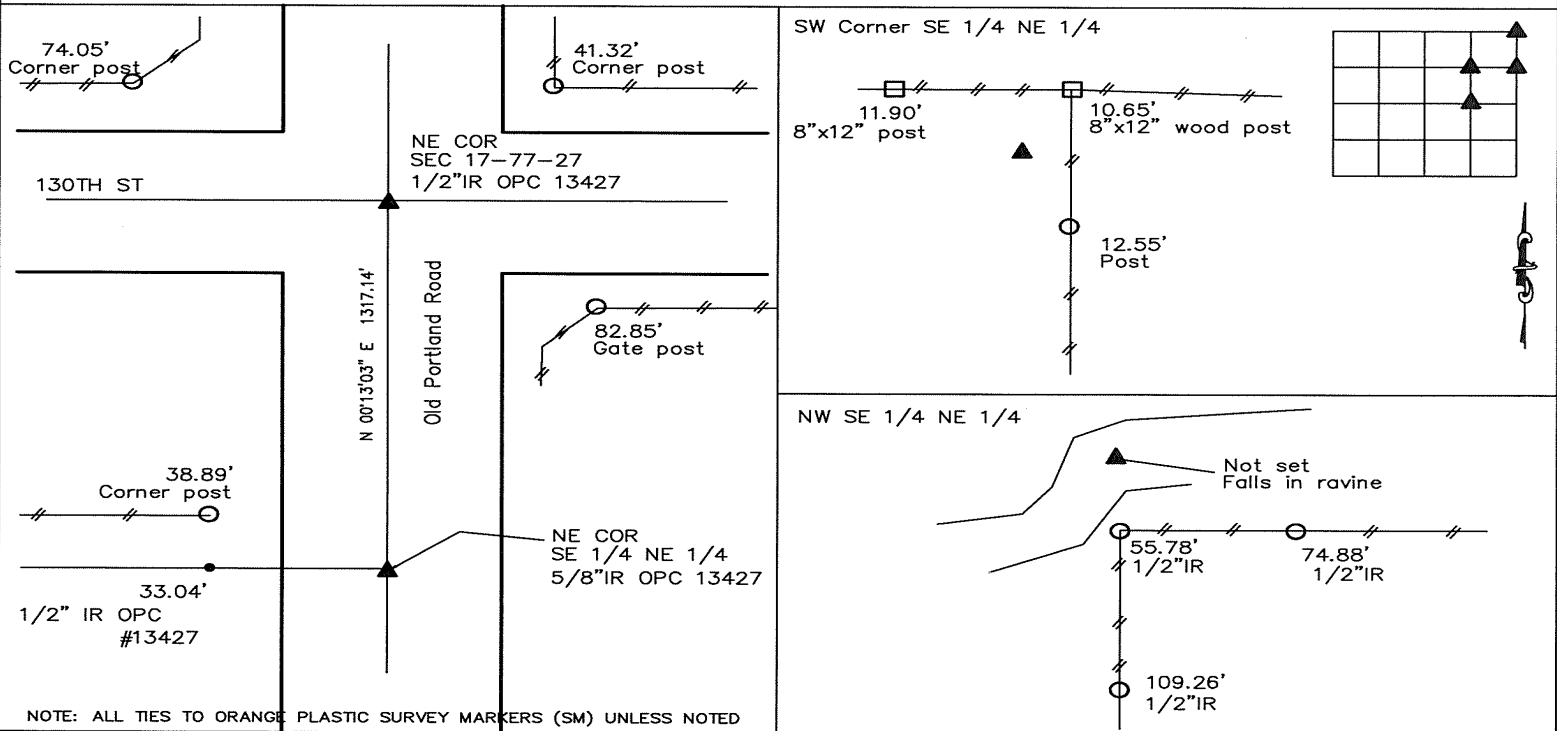
Land Survey Monuments situated in Section 17, Township 77, Range 27, the Fifth Principal Meridian, Madison County, Iowa.
 Previously recorded in None Found in County Recorder's Office

(Show reason for preparing this certificate, the evidence and detailed procedures used in establishing the corner positions & monumentation found or placed)

Monument Description and Remarks:

- NE Corner – Original obliterated by county road drainage project. Reset 1/2" iron rod orange cap from previous ties
- SW Corner SE 1/4 NE 1/4 – Location based on 1/4 section breakdown. Found 1/2" iron rod orange cap from previous survey
- NE Corner SE 1/4 NE 1/4 – Location based on 1/4 section breakdown. Set 5/8" iron rod orange cap
- NW SE 1/4 NE 1/4 Corner – Location based on 1/4 section breakdown. Falls in ravine. Reference corners set as shown

PLAN-VIEW



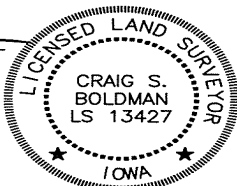
I HEREBY CERTIFY THAT THIS LAND SURVEYING DOCUMENT WAS PREPARED AND THE RELATED SURVEY WORK WAS PERFORMED BY ME OR UNDER MY DIRECT PERSONAL SUPERVISION AND THAT I AM A DULY LICENSED LAND SURVEYOR UNDER THE LAWS OF THE STATE OF IOWA.

SIGNATURE Craig S. Boldman
 CRAIG S. BOLDMAN

DATE: 10/6/23 LICENSE NO 13427

MY RENEWAL DATE IS DECEMBER 31, 2024

COVERS SHEETS A4



CORNERS TO BE INDEXED

| Corners | Section | Township | Range |
|------------------|---------|----------|-------|
| NE | 17 | 77 | 27 |
| NW-SE 1/4 NE 1/4 | 17 | 77 | 27 |
| SW-SE 1/4 NE 1/4 | 17 | 77 | 27 |
| NE-SE 1/4 NE 1/4 | 17 | 77 | 27 |