

BK: 2023 PG: 1556  
 Recorded: 7/7/2023 at 2:26:57.0 PM  
 Pages 1  
 County Recording Fee: \$7.00  
 Iowa E-Filing Fee: \$3.13  
 Combined Fee: \$10.13  
 Revenue Tax:  
 BRANDY L. MACUMBER, RECORDER  
 Madison County, Iowa

PREPARED BY // RETURN TO:  
 CHAD ASBERRY // COOPER CRAWFORD & ASSOCIATES, LLC, 475 S. 50TH STREET, WEST DES MOINES, IA 50265, TEL: 515-783-2958

UNITED STATES PUBLIC LAND SURVEY CORNER CERTIFICATE

OF LAND SURVEY MONUMENT(S) SITUATED IN SECTION 27 , TOWNSHIP 76 N , RANGE 26 W , OF THE FIFTH PRINCIPAL MERIDIAN, MADISON COUNTY, IOWA. PREVIOUSLY RECORDED IN BOOK 1 PAGE 625 IN COUNTY RECORDER'S OFFICE.

MONUMENT DESCRIPTION AND REMARKS:

- THERE IS NO CERTIFICATE FOR THE CORNER ON FILE WITH THE RECORDER OF THE COUNTY IN WHICH THE CORNER IS LOCATED.
- THE SURVEYOR IN RESPONSIBLE CHARGE OF THE LAND SURVEYING ACCEPTS A CORNER POSITION WHICH DIFFERS FROM THAT SHOWN IN THE PUBLIC RECORDS OF THE COUNTY IN WHICH THE CORNER IS LOCATED.
- THE CORNER MONUMENT IS REPLACED OR MODIFIED IN ANY WAY.
- THE REFERENCE TIES IN AN EXISTING PUBLIC RECORD ARE INCORRECT OR MISSING.

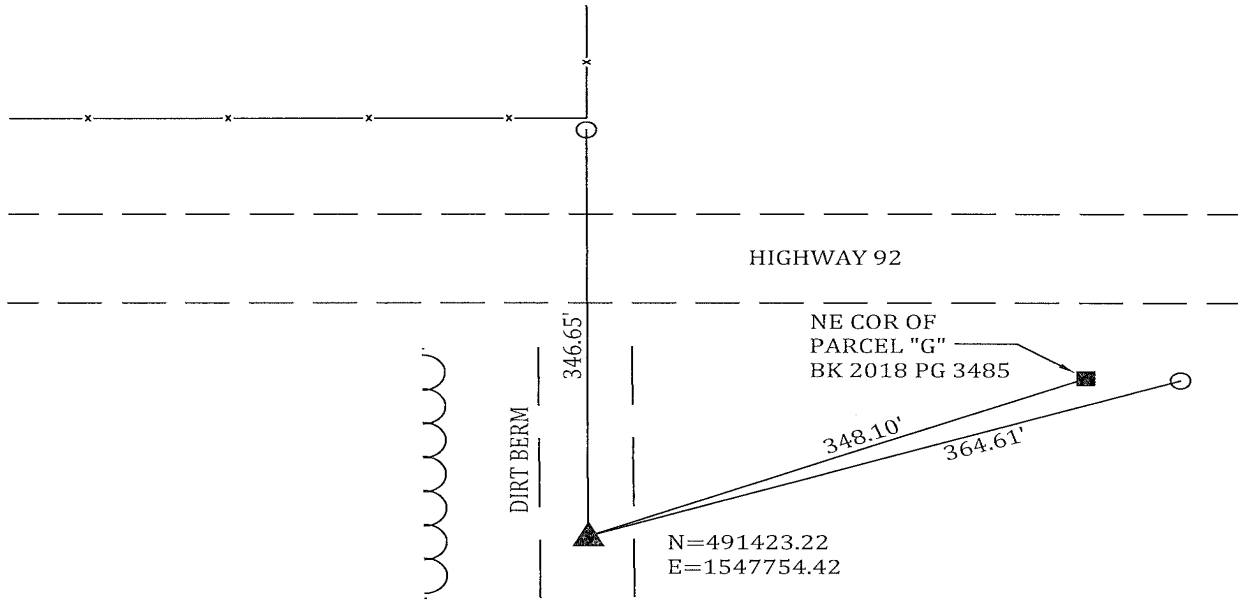
SOUTH 1/4 - CORNER MONUMENT OF RECORD IS DESCRIBED AS A CIRCULAR IRON ROD W/ CAP #6263. FOUND 5/8" REBAR W/ DAMAGED ALUMINUM CAP APPROX. 2.5' BELOW SURFACE OF DIRT BERM. ALL EXISTING TIES AND FENCE LINE HAVE BEEN REMOVED. VERIFIED FOUND MONUMENT POSITION WITH MULTIPLE SURVEYS LOCATED IN SECTION 27 AND SECTION 34. ALSO CHECKED LOCATION TO I.D.O.T. ROAD PLANS #FN-92-4(15)--21-61. ACCEPTED FOUND 5/8" REBAR AND CAP. TIED TO THREE PROPERTY MONUMENTS ALONG THE HIGHWAY.

CORNER CERTIFICATE IS BEING PREPARED AS PART OF A SURVEY LOCATED IN SECTION 27-76-26 AND 34-76-26.

(SHOW A MINIMUM OF THREE REFERENCE TIES TO DURABLE PHYSICAL OBJECTS, RELEVANT MONUMENTS AND PHYSICAL CONDITIONS THAT WILL ENABLE RECOVERY OF CORNER.)

SOUTH 1/4 CORNER

FOUND 5/8" REBAR w/  
 DAMAGED ALUMINUM CAP



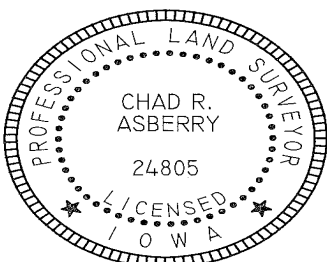
LEGEND:

○ = FND 5/8" REBAR w/ ALUM  
 I.D.O.T. CAP

■ = FND 1/2" REBAR w  
 YELLOW CAP #15982

DISTANCES ARE MEASURED  
 HORIZONTALLY

COORDINATES ARE IOWA STATE  
 PLANE SOUTH ZONE 1402



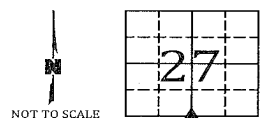
I HEREBY CERTIFY THAT THIS LAND SURVEYING DOCUMENT WAS PREPARED AND RELATED SURVEY WORK WAS PERFORMED BY ME OR UNDER MY DIRECT PERSONAL SUPERVISION AND THAT I AM A DULY LICENSED LAND SURVEYOR UNDER THE LAWS OF THE STATE OF IOWA.

*Chad R. Asberry*  
 CHAD R. ASBERRY, PLS #24805  
 LICENSE RENEWAL DATE: DEC. 31, 2023.  
 SHEETS COVERED BY THIS SEAL: 1 OF 1

7/7/23  
 DATE

CORNERS TO BE INDEXED

CORNER	SECTION	TWP	RANGE
S 1/4	27	76N	26W



NOT TO SCALE