

PREPARED BY // RETURN TO:
 CHAD ASBERRY // COOPER CRAWFORD & ASSOCIATES, LLC, 475 S. 50TH STREET, WEST DES MOINES, IA 50265, TEL: 515-783-2958

UNITED STATES PUBLIC LAND SURVEY CORNER CERTIFICATE

OF LAND SURVEY MONUMENT(S) SITUATED IN SECTION 13 , TOWNSHIP 77 N , RANGE 27 W , OF THE FIFTH PRINCIPAL MERIDIAN, MADISON COUNTY, IOWA. PREVIOUSLY RECORDED IN SEE BELOW IN COUNTY RECORDER'S OFFICE.

MONUMENT DESCRIPTION AND REMARKS:

- THERE IS NO CERTIFICATE FOR THE CORNER ON FILE WITH THE RECORDER OF THE COUNTY IN WHICH THE CORNER IS LOCATED.
- THE SURVEYOR IN RESPONSIBLE CHARGE OF THE LAND SURVEYING ACCEPTS A CORNER POSITION WHICH DIFFERS FROM THAT SHOWN IN THE PUBLIC RECORDS OF THE COUNTY IN WHICH THE CORNER IS LOCATED.
- THE CORNER MONUMENT IS REPLACED OR MODIFIED IN ANY WAY.
- THE REFERENCE TIES IN AN EXISTING PUBLIC RECORD ARE INCORRECT OR MISSING.

NE CORNER - FOUND 3/4" SQ. HEADED BOLT 0.5' BELOW GRAVEL ROAD SURFACE AS DESCRIBED ON CORNER CERTIFICATE LOCATED IN BOOK 1 PAGE 116. FOUND ONE TIE NOT OF RECORD. ALL OTHER RECORDED TIES HAVE BEEN REMOVED. VERIFIED LOCATION WITH MULTIPLE SURVEYS IN THE NE 1/4 OF SECTION 13-77-27. ACCEPTED FOUND MONUMENT AND SET TWO ADDITIONAL TIES.

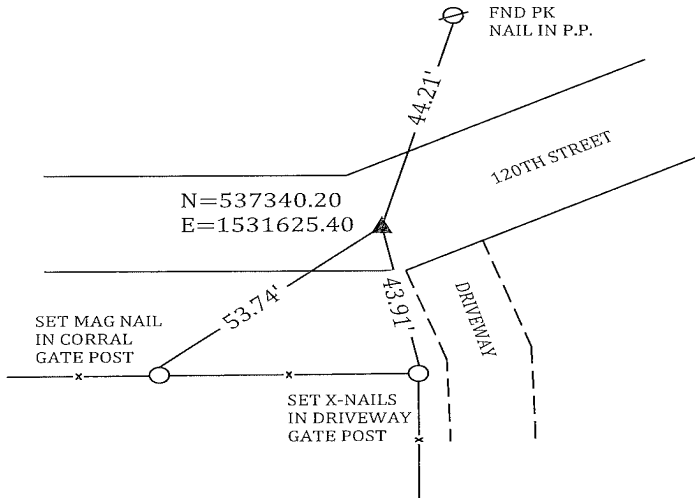
SE CORNER - NO CORNER CERTIFICATE FOUND IN THE COUNTY RECORDER'S OFFICE. FOUND PLATS OF SURVEY IN SECTION 24-77-27 THAT DESCRIBE THE CORNER AS A 1/2" IRON PIN. FOUND SAID 1/2" IRON PIN WITH YELLOW CAP #2592 IN ANCIENT EAST-WEST FENCE LINE. VERIFIED LOCATION WITH PLAT OF SURVEY. FOUND TWO 5/8" REBAR TIES NOT OF RECORD. ACCEPTED FOUND 1/2" IRON PIN AND CAP AND SET ONE ADDITIONAL TIE.

CORNER CERTIFICATE IS BEING PREPARED AS PART OF A SURVEY LOCATED IN THE E 1/2 OF SECTION 13-77-27

(SHOW A MINIMUM OF THREE REFERENCE TIES TO DURABLE PHYSICAL OBJECTS, RELEVANT MONUMENTS AND PHYSICAL CONDITIONS THAT WILL ENABLE RECOVERY OF CORNER.)

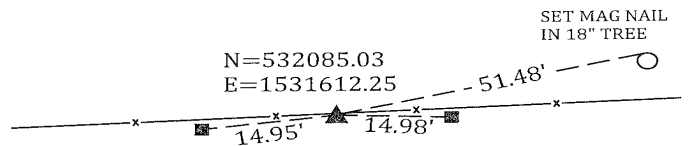
NE CORNER

FOUND 3/4" SQ. HEAD BOLT



SE CORNER

FOUND 1/2" IRON PIN W/
YELLOW CAP #2592

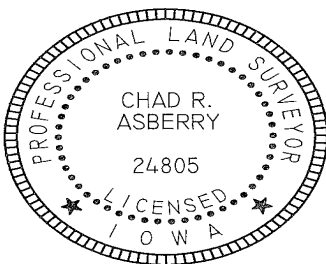


LEGEND: ○ = SET REFERENCE MONUMENT, AS NOTED

■ = FND 5/8" REBAR w/ CEC CAP

DISTANCES ARE MEASURED HORIZONTALLY

COORDINATES ARE IOWA STATE PLANE SOUTH ZONE 1402

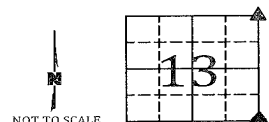


I HEREBY CERTIFY THAT THIS LAND SURVEYING DOCUMENT WAS PREPARED AND RELATED SURVEY WORK WAS PERFORMED BY ME OR UNDER MY DIRECT PERSONAL SUPERVISION AND THAT I AM A DULY LICENSED LAND SURVEYOR UNDER THE LAWS OF THE STATE OF IOWA.

[Signature]
 CHAD R. ASBERRY, PLS #24805
 LICENSE RENEWAL DATE: DEC. 31, 2023.
 SHEETS COVERED BY THIS SEAL: 1 OF 1
 DATE: 6/30/23

CORNERS TO BE INDEXED

CORNER	SECTION	TWP	RANGE
NE COR	13	77N	27W
SE COR	13	77N	27W



NOT TO SCALE