

BK: 2023 PG: 1530
 Recorded: 7/6/2023 at 8:13:59.0 AM
 Pages 1
 County Recording Fee: \$7.00
 Iowa E-Filing Fee: \$3.13
 Combined Fee: \$10.13
 Revenue Tax:
 BRANDY L. MACUMBER, RECORDER
 Madison County, Iowa

PREPARED BY // RETURN TO:
 CHAD ASBERRY // COOPER CRAWFORD & ASSOCIATES, LLC, 475 S. 50TH STREET, WEST DES MOINES, IA 50265, TEL: 515-783-2958

UNITED STATES PUBLIC LAND SURVEY CORNER CERTIFICATE

OF LAND SURVEY MONUMENT(S) SITUATED IN SECTION 18 , TOWNSHIP 77 N , RANGE 26 W , OF THE FIFTH PRINCIPAL MERIDIAN, MADISON COUNTY, IOWA. PREVIOUSLY RECORDED IN SEE BELOW IN COUNTY RECORDER'S OFFICE.

MONUMENT DESCRIPTION AND REMARKS:

- THERE IS NO CERTIFICATE FOR THE CORNER ON FILE WITH THE RECORDER OF THE COUNTY IN WHICH THE CORNER IS LOCATED.
- THE SURVEYOR IN RESPONSIBLE CHARGE OF THE LAND SURVEYING ACCEPTS A CORNER POSITION WHICH DIFFERS FROM THAT SHOWN IN THE PUBLIC RECORDS OF THE COUNTY IN WHICH THE CORNER IS LOCATED.
- THE CORNER MONUMENT IS REPLACED OR MODIFIED IN ANY WAY.
- THE REFERENCE TIES IN AN EXISTING PUBLIC RECORD ARE INCORRECT OR MISSING.

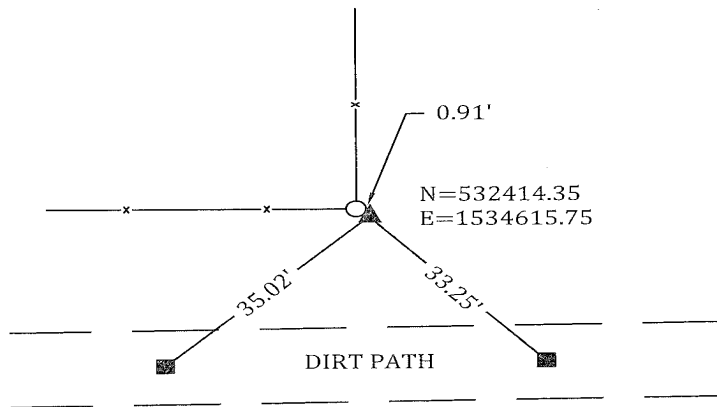
SE CORNER - NO CORNER CERTIFICATE FOUND IN THE COUNTY RECORDER'S OFFICE. FOUND PLATS OF SURVEY IN SECTION 20-77-26 AND SECTION 17-77-26 THAT DESCRIBE THE CORNER AS A 1/2" IRON PIN. FOUND SAID 1/2" IRON PIN WITH YELLOW CAP #2592 ON SOUTHEAST SIDE OF ANCIENT FENCE CORNER POST. VERIFIED LOCATION WITH PLAT OF SURVEY. ACCEPTED FOUND 1/2" IRON PIN AND CAP. SET THREE NEW TIES.

CORNER CERTIFICATE IS BEING PREPARED AS PART OF A SURVEY LOCATED IN THE W 1/2 OF GOV'T LOTS 3 AND 4 OF SECTION 18-77-26

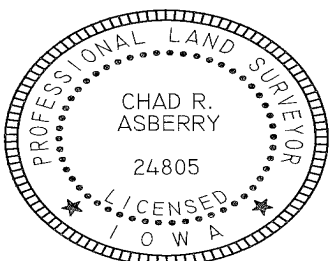
(SHOW A MINIMUM OF THREE REFERENCE TIES TO DURABLE PHYSICAL OBJECTS, RELEVANT MONUMENTS AND PHYSICAL CONDITIONS THAT WILL ENABLE RECOVERY OF CORNER.)

SE CORNER

FOUND 1/2" IRON PIN W/
 YELLOW CAP #2592



LEGEND: ○ = FND CORNER POST ■ = SET 5/8" REBAR w/ RED CCA CONTROL CAP DISTANCES ARE MEASURED HORIZONTALLY COORDINATES ARE IOWA STATE PLANE SOUTH ZONE 1402

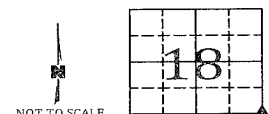


I HEREBY CERTIFY THAT THIS LAND SURVEYING DOCUMENT WAS PREPARED AND RELATED SURVEY WORK WAS PERFORMED BY ME OR UNDER MY DIRECT PERSONAL SUPERVISION AND THAT I AM A DULY LICENSED LAND SURVEYOR UNDER THE LAWS OF THE STATE OF IOWA.

[Signature] 6/30/23
 CHAD R. ASBERRY, PLS #24805 DATE

CHAD R. ASBERRY, PLS #24805
 LICENSE RENEWAL DATE: DEC. 31, 2023.
 SHEETS COVERED BY THIS SEAL: 1 OF 1

CORNERS TO BE INDEXED			
CORNER	SECTION	TWP	RANGE
SE COR	18	77N	26W



NOT TO SCALE