

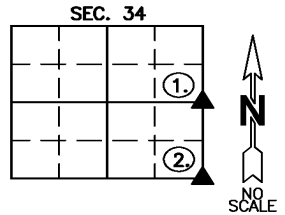


806 Wyoming Ave., Creston, Iowa 50801 Phone: (641)782-4005

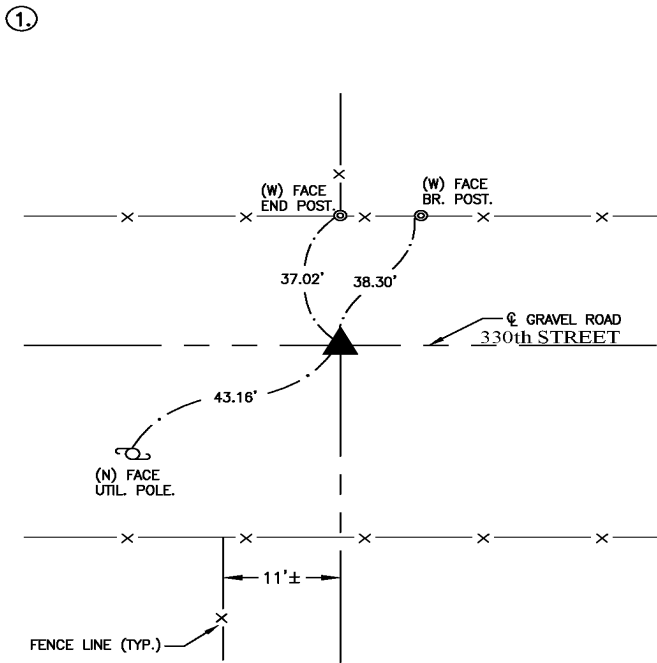
UNITED STATES PUBLIC LAND SURVEY CORNER CERTIFICATE OF

LAND SURVEY MONUMENTS SITUATED IN SECTION 34, TOWNSHIP 74 NORTH, RANGE 28 WEST OF THE 5TH P.M. IN MADISON COUNTY, IOWA. PREVIOUSLY RECORDED IN SEE BELOW IN COUNTY RECORDER'S OFFICE.

MONUMENT DESCRIPTION AND REMARKS: **①** E1/4 COR. SEC. 34-74-28, FOUND CONCRETE MONUMENT, 4" DEEP IN CENTER OF EAST-WEST GRAVEL ROAD AND IN LINE W/ FENCE RUNNING NORTH PER TIES ON IOWA HIGHWAY COMMISSION LAND CORNER SURVEY PLAT, ACCEPTED LOCATION & RETIED CORNER DUE TO NO CERTIFICATE ON FILE W/ COUNTY RECORDER.
② SE COR. SEC. 34-74-28, FOUND CONCRETE MONUMENT, 7" DEEP IN CENTER OF NORTH-SOUTH ABANDONED ROAD IN LINE WITH FENCES RUNNING EAST & WEST PER PREVIOUS CORNER CERTIFICATE RECORDED IN BOOK 2006 AT PAGE 682. ACCEPTED LOCATION & RETIED CORNER DUE TO MISSING TIES.

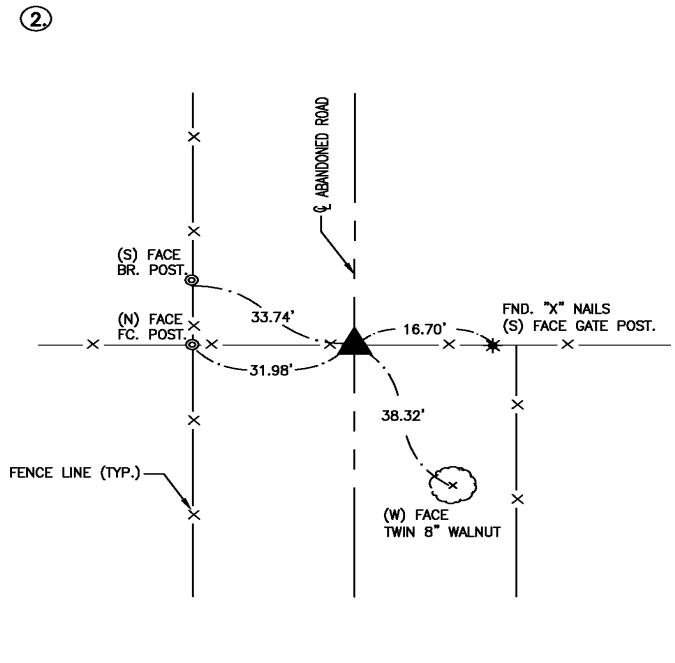


(SHOW A MINIMUM OF THREE REFERENCE TIES TO DURABLE PHYSICAL OBJECTS, RELEVANT MONUMENTS, AND PHYSICAL CONDITIONS THAT WILL ENABLE RECOVERY OF THE CORNER)



ALL TIES = MAG NAIL W/ NYLON WASHER, UNLESS NOTED.

**E1/4 COR. SEC. 34, T-74-N, R-28-W,
 FOUND CONCRETE MONUMENT**



ALL TIES = MAG NAIL W/ NYLON WASHER, UNLESS NOTED.

**SE COR. SEC. 34, T-74-N, R-28-W,
 FOUND CONCRETE MONUMENT**

I hereby certify that this land surveying document was prepared and the related survey work was performed by me or under my direct personal supervision and that I am a duly licensed Professional Land Surveyor under the laws of the State of Iowa.

Joshua E. Schneider
 Joshua E. Schneider, P.L.S.
 License number: 24655
 My license renewal date is December 31, 2023
 This page only covered by this seal:
 Date: 3-30-2022



LIST OF CORNERS TO BE INDEXED

CORNERS	SECTIONS	TOWNSHIP	RANGE
E1/4	34	74	28
SE	34	74	28

SURVEY FOR: MATT CLAYTON
 DATE: 3-29-22
 PROJECT NO. 6022671