

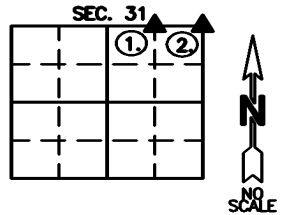


806 Wyoming Ave., Creston, Iowa 50801 Phone: (641)782-4005

UNITED STATES PUBLIC LAND SURVEY CORNER CERTIFICATE OF

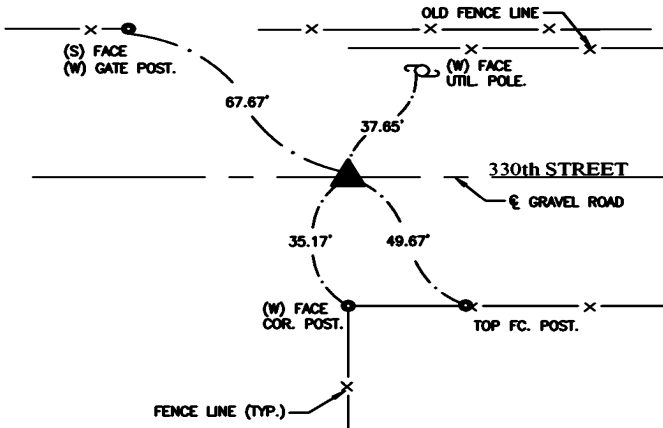
LAND SURVEY MONUMENTS SITUATED IN SECTION 31, TOWNSHIP 74 NORTH, RANGE 28 WEST OF THE 5TH P.M. IN MADISON COUNTY, IOWA.
 PREVIOUSLY RECORDED IN SEE BELOW IN COUNTY RECORDER'S OFFICE.

MONUMENT DESCRIPTION AND REMARKS: ① NE COR. NW1/4 NE1/4 SEC. 31-74-28, FOUND 5/8" REBAR W/ OPC#7995 6" DEEP PER CERTIFICATE FILED IN BOOK 2007, PAGE 2293, ACCEPTED LOCATION & RETIED CORNER DUE TO MISSING TIES.
 ② NE COR. SEC. 31-74-28, FOUND 5/8" REBAR W/ OPC#7995, 8" DEEP IN MIDDLE OF COUNTY ROAD INTERSECTION PER CERTIFICATE FILED IN BOOK 2004, PAGE 1057, ACCEPTED LOCATION & RETIED CORNER DUE TO MISSING TIES.



(SHOW A MINIMUM OF THREE REFERENCE TIES TO DURABLE PHYSICAL OBJECTS, RELEVANT MONUMENTS, AND PHYSICAL CONDITIONS THAT WILL ENABLE RECOVERY OF THE CORNER)

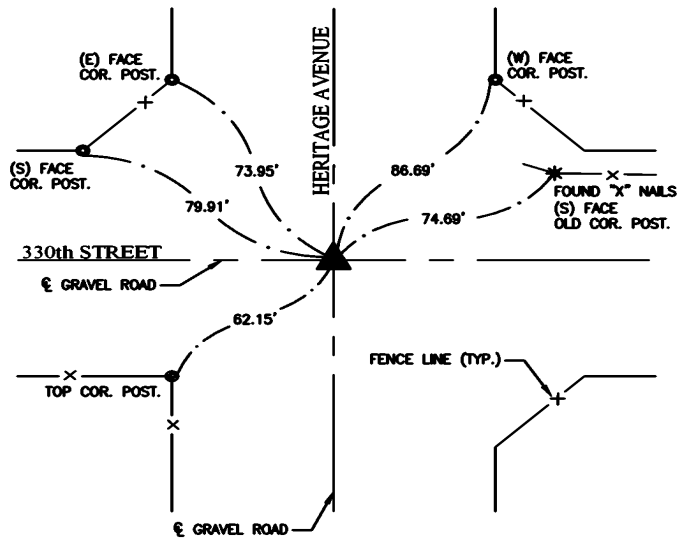
①



ALL TIES = MAG NAIL W/ NYLON WASHER, UNLESS NOTED.

NE COR. NW1/4 NE1/4 SEC. 31, T-74-N, R-28-W,
 FOUND 5/8" REBAR W/ OPC#7995

②



ALL TIES = MAG NAIL W/ NYLON WASHER, UNLESS NOTED.

NE COR. SEC. 31, T-74-N, R-28-W,
 FOUND 5/8" REBAR W/ OPC#7995

I hereby certify that this land surveying document was prepared and the related survey work was performed by me or under my direct personal supervision and that I am a duly licensed Professional Land Surveyor under the laws of the State of Iowa.

Joshua E. Schneider 12-28-2022
 Joshua E. Schneider, P.L.S. Date
 License number: 24655
 My license renewal date is December 31, 2023
 This page only covered by this seal:



LIST OF CORNERS TO BE INDEXED

CORNERS	SECTIONS	TOWNSHIP	RANGE
NE NW1/4 NE1/4	31	74	28
NE	31	74	28

SURVEY FOR: BENJAMIN J. WAIGAND
 DATE: 12-28-22
 PROJECT NO. 6022864