



BK: 2022 PG: 2622
 Recorded: 9/6/2022 at 8:13:10.0 AM
 Pages 1
 County Recording Fee: \$7.00
 Iowa E-Filing Fee: \$3.00
 Combined Fee: \$10.00
 Revenue Tax:
 LISA SMITH RECORDER
 Madison County, Iowa

G GARDEN & ASSOC.

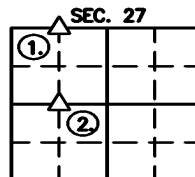
806 Wyoming Ave., Creston, Iowa 50801 Phone: (641)782-4005

UNITED STATES PUBLIC LAND SURVEY CORNER CERTIFICATE OF

LAND SURVEY MONUMENTS SITUATED IN SECTION 27, TOWNSHIP 74 NORTH, RANGE 27 WEST OF THE 5TH P.M. IN MADISON COUNTY, IOWA.

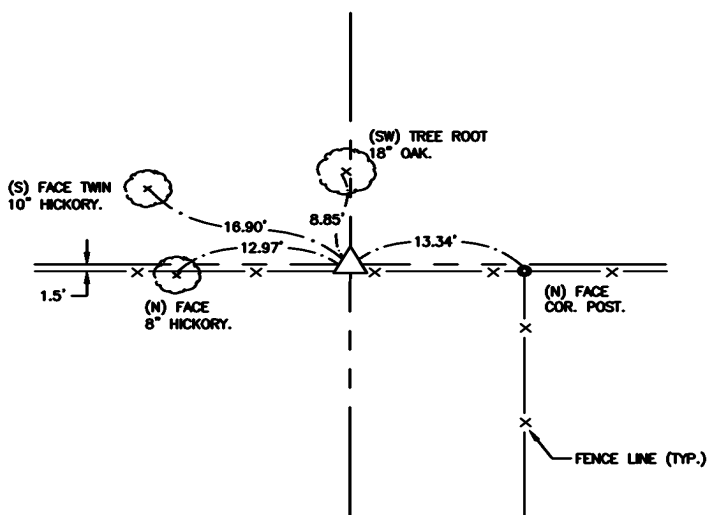
PREVIOUSLY RECORDED IN NO CERTIFICATE OF RECORD IN COUNTY RECORDER'S OFFICE.

MONUMENT DESCRIPTION AND REMARKS: ① NW COR. NE1/4 NW1/4 SEC. 27-74-27, PROBOD AROUND CORNER POST FOUND 2 STONES, ALTHOUGH HILL SIDE IS LITTERED WITH SIMILAR STONES, UPON EXAMINATION OF THE FENCE RUNNING SOUTH, FENCE MEANDER (SE) FOR 1/8 MILE THEN MEANDER (SW) FOR NEXT 1/8 MILE, THEREFOR DID NOT ACCEPT FENCE AS LOCATION OF 1/4 1/4 LINE, IN TURN SET A 5/8" X 24" REBAR W/ YPC#24655 AT MID POINT BETWEEN NW & N1/4 COR. ② SW COR. SE1/4 NW1/4 SEC. 27-74-27, SET 5/8" X 24" REBAR W/ YPC#24655 AT MID POINT BETWEEN FOUND MONUMENTS AT THE CENTER & W1/4 COR. SEC. 27-74-27.



(SHOW A MINIMUM OF THREE REFERENCE TIES TO DURABLE PHYSICAL OBJECTS, RELEVANT MONUMENTS, AND PHYSICAL CONDITIONS THAT WILL ENABLE RECOVERY OF THE CORNER)

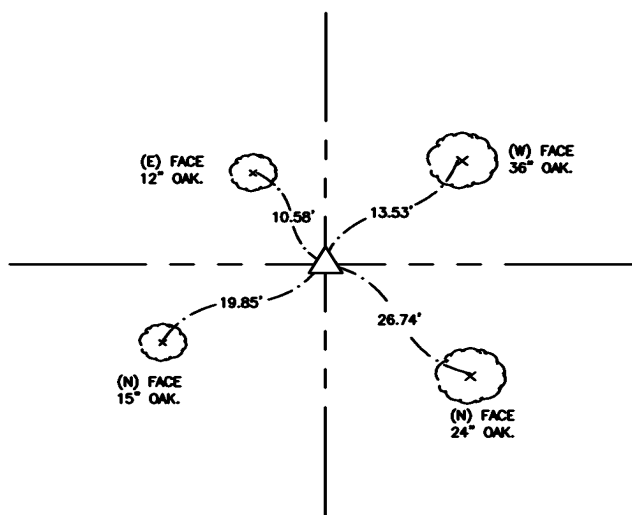
①



ALL TIES = MAG NAIL W/ NYLON WASHER, UNLESS NOTED.

NW COR. NE1/4 NW1/4 SEC. 27, T-74-N, R-27-W,
 SET 5/8" X 24" REBAR W/ YPC#24655

②



ALL TIES = MAG NAIL W/ NYLON WASHER, UNLESS NOTED.

SW COR. SE1/4 NW1/4 SEC. 27, T-74-N, R-27-W,
 SET 5/8" X 24" REBAR W/ YPC#24655

I hereby certify that this land surveying document was prepared and the related survey work was performed by me or under my direct personal supervision and that I am a duly licensed Professional Land Surveyor under the laws of the State of Iowa.

Joshua E. Schneider 9-2-2022 Date
 Joshua E. Schneider, P.L.S.
 License number: 24655
 My license renewal date is December 31, 2023
 This page only covered by this seal:



LIST OF CORNERS TO BE INDEXED

CORNERS	SECTIONS	TOWNSHIP	RANGE
NW NE1/4 NW1/4	27	74	27
SW SE1/4 NW1/4	27	74	27

SURVEY FOR: BRIANNE GARRETT
 DATE: 9-2-22
 PROJECT NO. 6022801