

BK: 2022 PG: 1263  
 Recorded: 4/29/2022 at 3:36:38.0 PM  
 Pages 1  
 County Recording Fee: \$7.00  
 Iowa E-Filing Fee: \$3.13  
 Combined Fee: \$10.13  
 Revenue Tax:  
 LISA SMITH RECORDER  
 Madison County, Iowa

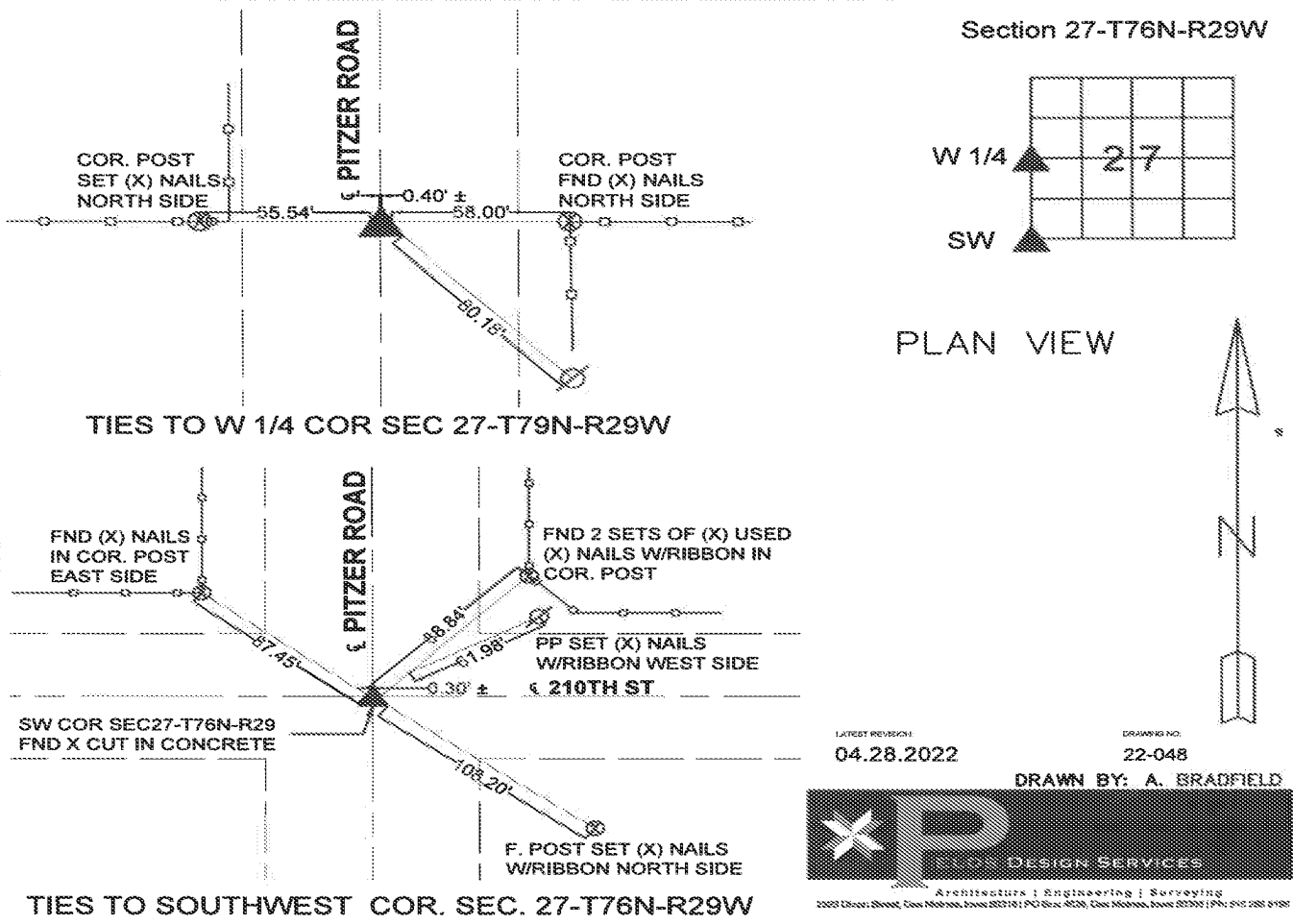
CORRECTION FOR BOOK 2022 PAGE 1236

PREPARED BY: PELDS DESIGN SERVICES - 2323 DIXON STREET, DES MOINES, IOWA 50316 - PH. (515)265-8196

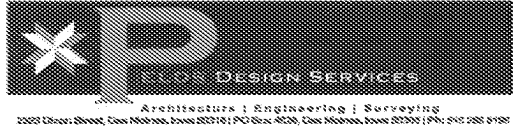
UNITED STATES PUBLIC LAND SURVEY CORNER CERTIFICATE  
 of

LAND SURVEY MONUMENTS SITUATED IN SECTION 27 TOWNSHIP 76 North RANGE  
29 West of the Fifth Principal Meridian, Madison County, Iowa.  
 Previously recorded in Book 01 on Page 229 in the office of the County Recorder.

- Monument Description & Remarks:
1. W 1/4 Corner found pin With Yellow Cap (Unreadable).
  2. SW Corner found "X" Cut in Concrete.
  3. New Certificate because old ties were missing.



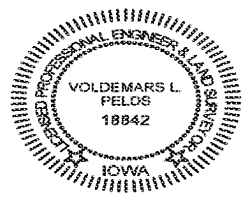
LATEST REVISION: 04.28.2022  
 DRAWING NO: 22-048  
 DRAWN BY: A. BRADFELD



TIES TO SOUTHWEST COR. SEC. 27-T76N-R29W

I HEREBY CERTIFY THAT THIS LAND SURVEYING DOCUMENT WAS PREPARED AND THE RELATED WORK WAS PERFORMED BY ME OR UNDER MY DIRECT PERSONAL SUPERVISION AND THAT I AM A DULY LICENSED PROFESSIONAL LAND SURVEYOR UNDER THE LAWS OF THE STATE OF IOWA.

*Volde Mars L Pelos* 4/29/2022  
 VOLDEMARS L. PELOS, P.L.S., IA, LIC. NO. 18842 DATE  
 MY LICENSE RENEWAL DATE IS DECEMBER 31, 2023  
 ADDITIONAL PAGES OR SHEETS COVERED BY THIS SEAL (NONE UNLESS INDICATED HERE)



Corner	Section	Twp	Range
W 1/4 Corner	27	76	29
SW Corner	27	76	29
E 1/4 Corner	28	76	29
SE Corner	28	76	29
NW Corner	34	76	29