

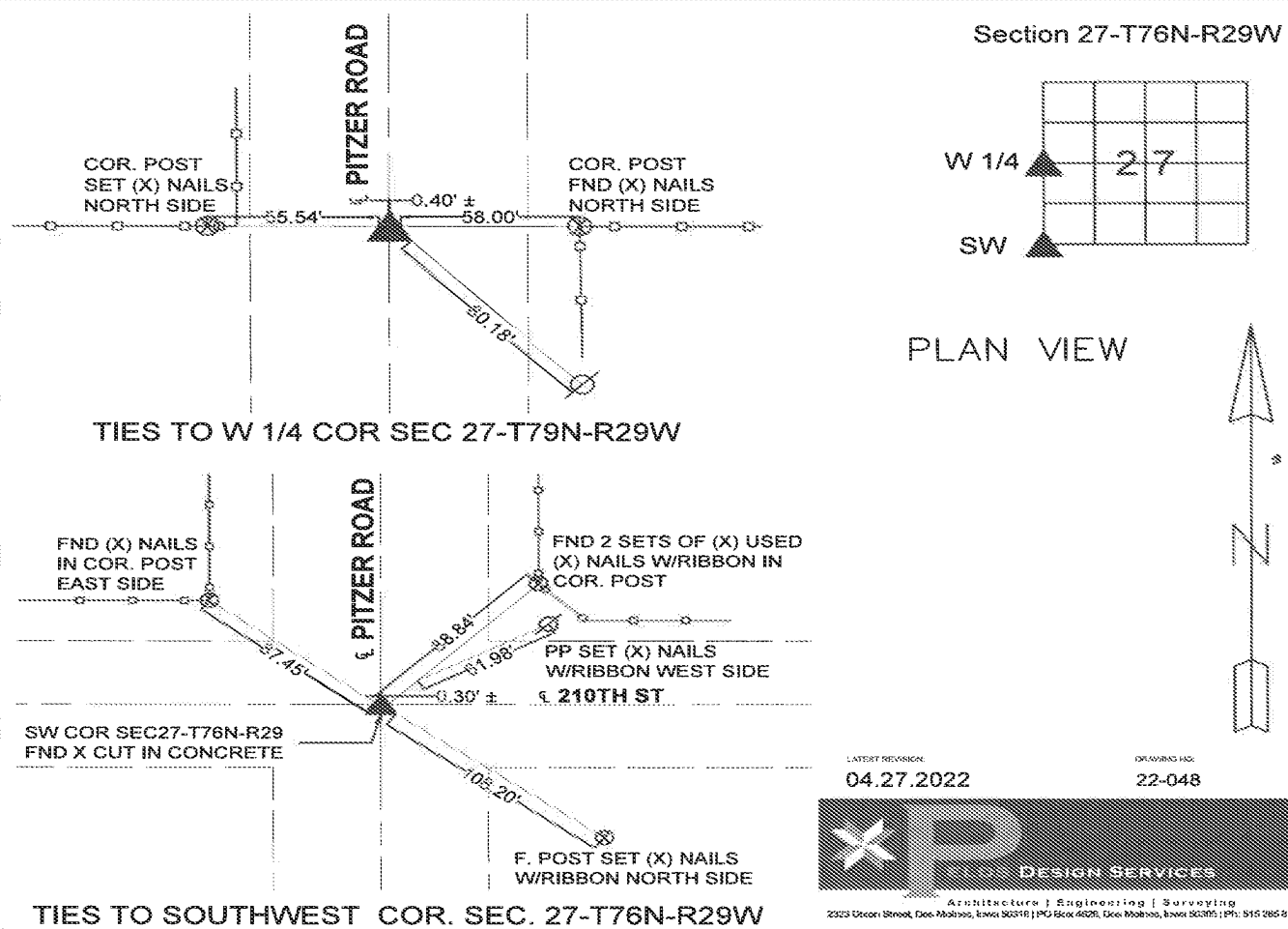
PREPARED BY: PELDS DESIGN SERVICES - 2323 DIXON STREET, DES MOINES, IOWA 50316 - PH. (515)265-8196

UNITED STATES PUBLIC LAND SURVEY CORNER CERTIFICATE of

LAND SURVEY MONUMENTS SITUATED IN SECTION 08, TOWNSHIP 76 North, RANGE 29 West, of the Fifth Principal Meridian, Madison County, Iowa.
 Previously recorded in Book 01 on Page 229 in the office of the County Recorder.

Monument Description & Remarks:

1. W 1/4 Corner found pin With Yellow Cap (Unreadable).
2. SW Corner found "X" Cut in Concrete.
3. New Certificate because old ties were missing.



LATEST REVISION: 04.27.2022 DRAWING NO: 22-048

PELDS DESIGN SERVICES
 Architecture | Engineering | Surveying
 2323 Dixon Street, Des Moines, Iowa 50316 | PO Box 4626, Des Moines, Iowa 50305 | PH: 515 265 8196

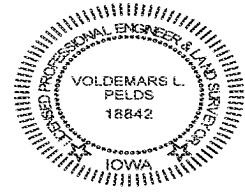
I HEREBY CERTIFY THAT THIS LAND SURVEYING DOCUMENT WAS PREPARED AND THE RELATED WORK WAS PERFORMED BY ME OR UNDER MY DIRECT PERSONAL SUPERVISION AND THAT I AM A DULY LICENSED PROFESSIONAL LAND SURVEYOR UNDER THE LAWS OF THE STATE OF IOWA.

Voldebars L. Pelds 4/27/2022

VOLDEMARS LEO PELDS, P.L.S., LIC. NO. 18842 DATE

MY LICENSE RENEWAL DATE IS DECEMBER 31, 2023

ADDITIONAL PAGES OR SHEETS COVERED BY THIS SEAL (NONE UNLESS INDICATED HERE):



Corner	Section	Twp	Range
W 1/4 Corner	27	76	29
SW Corner	27	76	29
E 1/4 Corner	28	76	29
SE Corner	28	76	29
NW Corner	34	76	29