

This document prepared by : Beck Engineering, Inc. - David L. Wilberding, P.L.S. #10315
 110 East Indian Street, Cherokee, Iowa 51012 (info@beck-engineering.net) (712)-225-9025

United States Public Land Survey Corner Certificate of Land Survey Monuments situated in
 Section 13, Township 74 North, Range 26 West of the Fifth Principal Meridian, Madison County, Iowa.

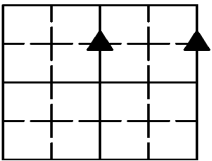
SE COR. - NE1/4 NE1/4: Found 15" x 10" x 6" Brown Stone, 2" deep, on the Northwest side of existing hedge post. Corner is in line with old fence lines running North-South-West. **Reason for filing:** There is no certificate for the corner on files. Accepted this as true Section Corner.

SW COR. - NW1/4 NE1/4: Found 15" x 12" x 8" Brown Stone, 4" deep, on the Northeast side of existing hedge post. Corner is in line with old fence lines running North-East. **Reason for filing:** There is no certificate for the corner on files. Accepted this as true Section Corner.

Requestor: Thomas F. Kivell and Tamara J. Kivell Proprietor: Thomas F. Kivell and Tamara J. Kivell

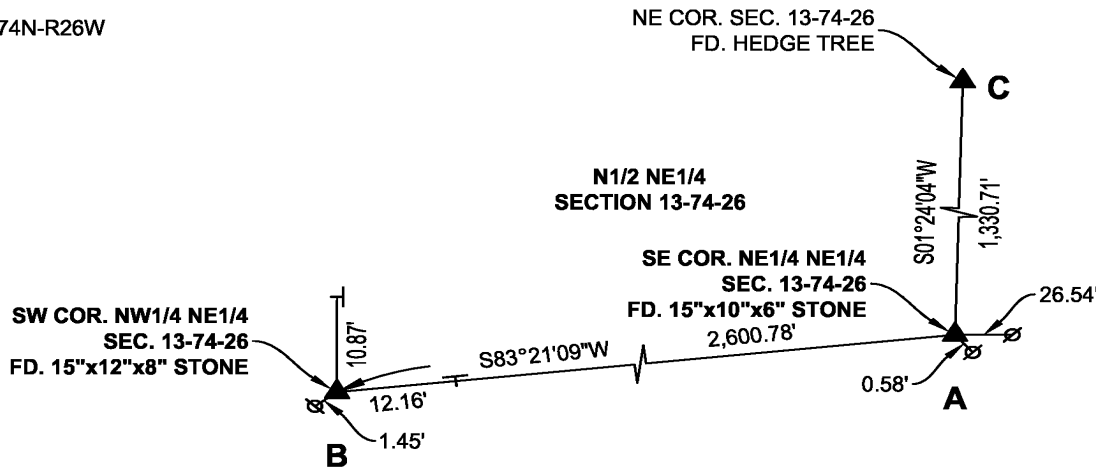
LOCATION MAP CORNER INDEX:

ID	NORTHING	EASTING
A	7352261.28	18479973.85
B	7351960.21	18477390.55
C	7353591.60	18480006.39



1. SE COR. NE1/4 NE1/4
2. SW COR. NW1/4 NE1/4

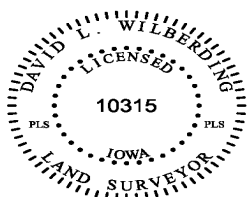
S13-T74N-R26W



NOTES:

1. PLAN-VIEW IS NOT TO SCALE.
2. ALL TIES REPRESENT HORIZONTAL DISTANCES.
3. BEARINGS ARE FROM THE IOWA REGIONAL COORDINATE SYSTEM ZONE 8 AMES-DES MOINES.

⊘ TOP CENTER OF HEDGE POST
 -| TOP CENTER OF T-POST



I hereby certify that this land surveying document was prepared and the related survey work was performed by me or under my direct personal supervision and that I am a duly licensed Professional Land Surveyor under the laws of the State of Iowa.

Date: David L. Wilberding, P.L.S. #10315
 License renewal date: 12/31/2023
 Pages certified by this seal: 1

BECK ENGINEERING, INC.

Civil Engineering - Land Surveying
 Landscape Architecture