

PREPARED BY: CRAIG S. BOLDMAN 521 WEST GREEN STREET WINTERSSET, IA 50273 PHONE (515)462-9242
UNITED STATES PUBLIC LAND SURVEY CORNER CERTIFICATE

Land Survey Monuments situated in Section 3, Township 77 N, Range 26 W, the Fifth Principal Meridian, Madison County, Iowa.

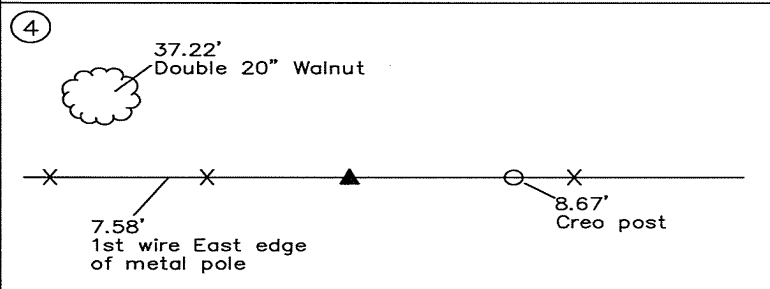
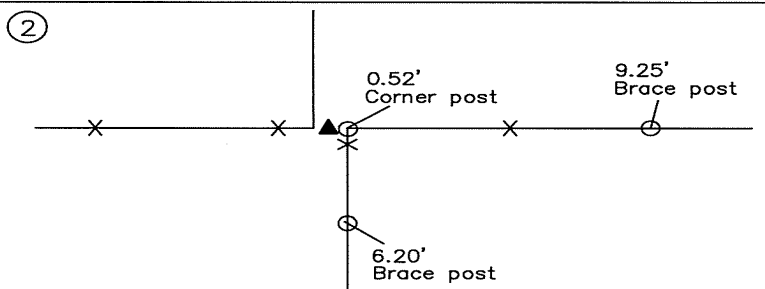
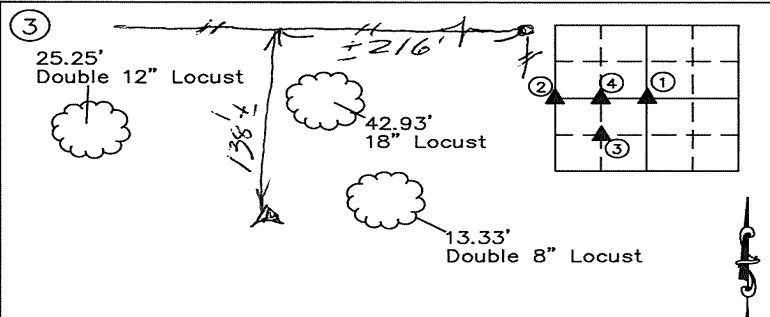
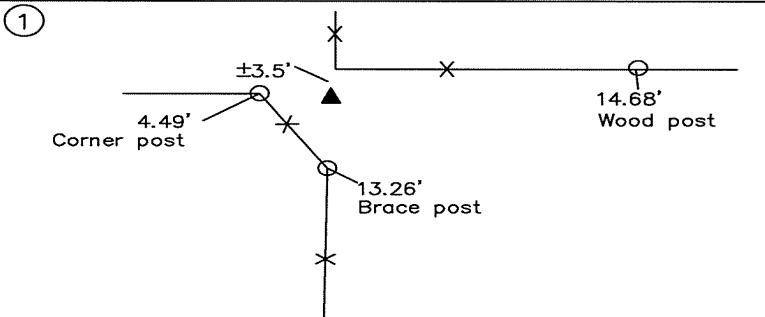
Previously recorded in None in County Recorder's Office

(Show reason for preparing this certificate, the evidence and detailed procedures used in establishing the corner positions & monumentation found or placed)

Monument Description and Remarks:

- ① Center – Found 1/2" iron rod under chopped out log. No ties found. Monument matches description of previous surveys.
- ② W 1/4 – Found 1/2" pipe with yellow cap. Retied due to changes.
- ③ SW Corner NE 1/4 SW 1/4 – Set 1/2" iron rod with orange plastic cap by dividing 1/4 section.
- ④ NW Corner NE 1/4 SW 1/4 – Set 1/2" iron rod with orange plastic cap by midpoint section corner and 1/4 corner.

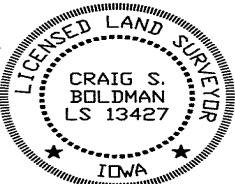
PLAN-VIEW



NOTE: ALL TIES TO ORANGE PLASTIC SURVEY MARKERS UNLESS NOTED

I HEREBY CERTIFY THAT THIS LAND SURVEYING DOCUMENT WAS PREPARED AND THE RELATED SURVEY WORK WAS PERFORMED BY ME OR UNDER MY DIRECT PERSONAL SUPERVISION AND THAT I AM A DULY LICENSED LAND SURVEYOR UNDER THE LAWS OF THE STATE OF IOWA.

SIGNATURE Craig S. Boldman
 CRAIG S. BOLDMAN
 DATE: 3/8/21 LICENSE NO 13427
 MY RENEWAL DATE IS DECEMBER 31, 2022
 COVERS SHEETS All



CORNERS TO BE INDEXED

Corners	Section	Township	Range
W 1/4	13	77	26
Center	13	77	26
NW Cor	13	77	26
NE 1/4 SW 1/4	13	77	26
SW Cor	13	77	26
NE 1/4 SW 1/4	13	77	26