

PREPARED BY & RETURN TO TERRY COADY, SNYDER & ASSOCIATES, INC. 2727 SW SNYDER ROAD, ANKENY, IOWA 50023 (515) 964-2020

UNITED STATES PUBLIC LAND SURVEY CORNER CERTIFICATE OF

Land Survey Monuments situated in Section 01, Township 77, Range 26, West of the Fifth Principal Meridian, Madison County, Iowa. Previously recorded in Book 2016, Page 3980 in County Recorder's Office.
 (book, page, document number, ect.)

(Show reason for preparing this certificate, the evidence and detailed procedures used in establishing the corner positions and monumentation found or placed.)

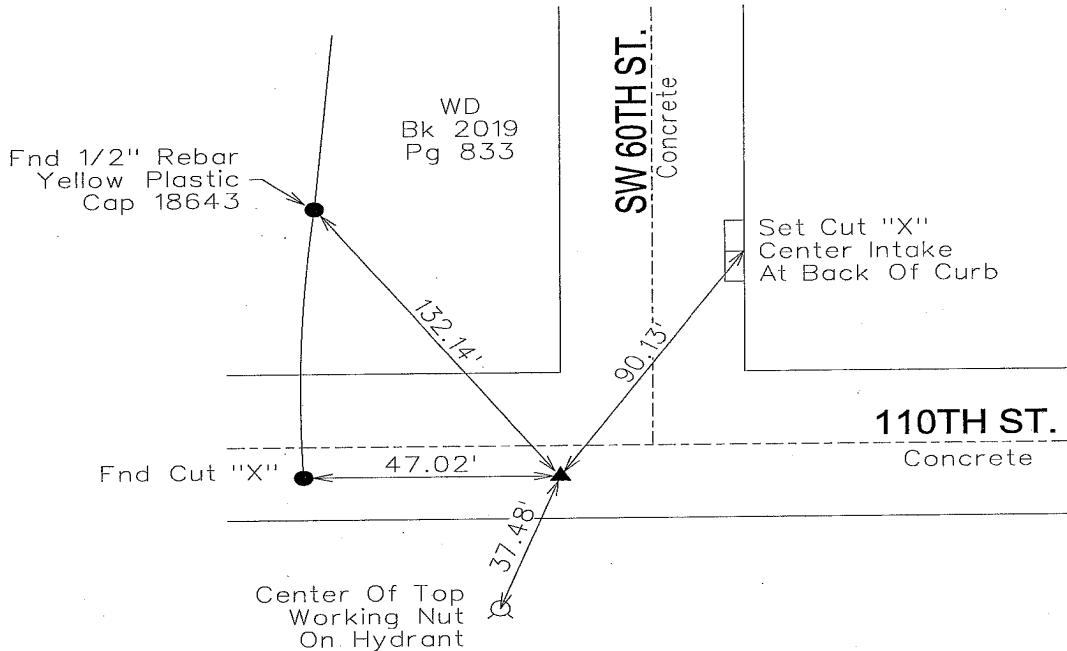
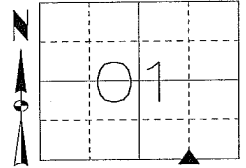
Monument Description and Remarks:

THE EXISTING CORNER CERTIFICATE RECORDED IN BOOK 2016, PAGE 3980 OF THE MADISON COUNTY RECORDER'S OFFICE INDICATED THAT THE SOUTHEAST CORNER OF THE SOUTHWEST 1/4 OF THE SOUTHEAST 1/4 IS MONUMENTED WITH 1/2" REBAR WITH YELLOW PLASTIC CAP #6808. RESET SECTION CORNER USING PROJECT COORDINATES AFTER CONSTRUCTION AND SET A CUT "X". THIS CERTIFICATE IS BEING PREPARED BECAUSE THE PREVIOUS MONUMENT AND TIES HAVE BEEN DESTROYED DUE TO CONSTRUCTION.

Plan-View

(Show a minimum of three reference ties to durable physical objects, relevant monuments and physical conditions that will enable recovery of the corner.)

SE CORNER SW 1/4, SE 1/4
SET CUT "X"



NOTE: ALL DISTANCES MEASURED HORIZONTAL UNLESS OTHERWISE NOTED.

licoady
2/8/2021
I:\Survey\Section_Corner\S&A_Section_Certificate\TWP_RNG_SEC_PROJECT_NMA\77-26-01_SESWF_1160936.dgn

I hereby certify that this land surveying document was prepared and the related survey work was performed by me or under my direct personal supervision and that I am a duly Licensed Professional Land Surveyor under the laws of the State of Iowa.

Terry Coady 2-8-2021
 Terry Coady, PLS Date

License Number 18643
 My License Renewal Date is December 31, 2021
 Pages or sheets covered by this seal:
 SHEET 1 OF 1

List Corners to be Indexed

Corners	Section	Twp	Range
SE CORNER SW 1/4, SE 1/4	01	77	26
NW CORNER NE 1/4, NE 1/4	12	77	26