


UNITED STATES PUBLIC LAND SURVEY CORNER CERTIFICATE

Land Survey Monument situated in
 Section 20, Township 77 NORTH, Range
27 WEST, of the Fifth Principal Meridian,
MADISON County, Iowa.

Previously recorded in N/A
 in County Recorder's Office.

FOR COUNTY RECORDER'S USE ONLY



Document 2021 4704
 Book 2021 Page 4704 Type 06 043 Pages 1
 Date 11/15/2021 Time 10:32:33AM
 Rec Amt \$7.00

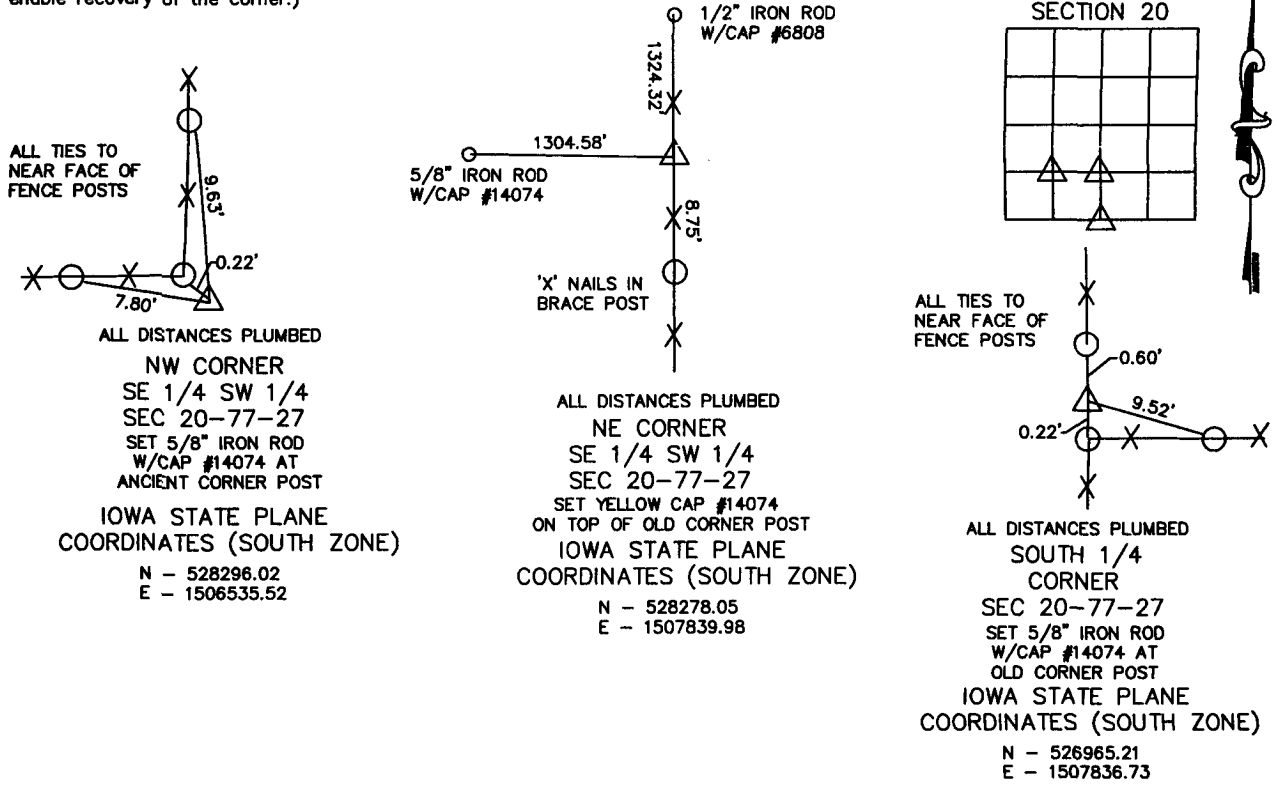
LISA SMITH, COUNTY RECORDER
 MADISON COUNTY IOWA

INDX
 ANNO
 SCAN
 CHEK

Monument Description and Remarks: NW CORNER SE 1/4 SW 1/4-SET 5/8" IRON ROD W/CAP
#14074 AT AN ANCIENT FENCE CORNER POST WITH OLD FENCES RUNNING NORTH AND WEST.
NE CORNER SE 1/4 SW 1/4-SET A CAP WITH #14074 ON TOP OF AN OLD CORNER WITH FENCES RUNNING
NORTH AND SOUTH AND EVIDENCE OF AN OLD FENCE THAT ONCE RAN WESTERLY.
SOUTH QUARTER CORNER-SET 5/8" IRON ROD W/CAP #14074 ON THE NORTHWEST SIDE OF AN OLD CORNER
POST WITH FENCES RUNNING NORTH AND SOUTH AND EAST.

PLAN-VIEW

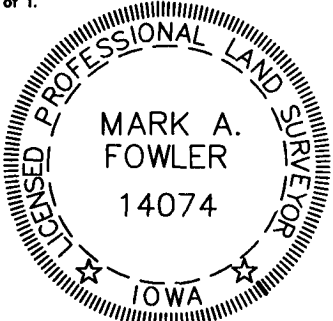
(Show a minimum of three reference ties to durable physical objects, relevant monuments and physical conditions that will enable recovery of the corner.)



I hereby certify that this land surveying document was prepared and the related survey work was performed by me or under my direct personal supervision and that I am a duly licensed land surveyor under the laws of the State of Iowa.

Mark A. Fowler
 Mark A. Fowler, LS
 License Number 14074

My license renewal date is December 31, 2022
 Pages or sheets covered by this seal: 1 of 1.



| List corners to be indexed | | | |
|----------------------------|---------|-----|-------|
| Corners | Section | Twp | Range |
| NW CORNER SE 1/4 SW 1/4 | 20 | 77 | 27 |
| NE CORNER SE 1/4 SW 1/4 | 20 | 77 | 27 |
| SOUTH QUARTER CORNER | 20 | 77 | 27 |