



Document 2021 2517

Book 2021 Page 2517 Type 06 043 Pages 1
Date 6/17/2021 Time 10:32:20AM
Rec Amt \$7.00

INDX
ANNO
SCAN
CHEK

LISA SMITH, COUNTY RECORDER
MADISON COUNTY IOWA

Prepared by: Vincent E. Piagentini, Abaci Consulting Inc, 3000 SE Grimes Blvd., Ste 800, Grimes IA, 50111; (515)986-5048

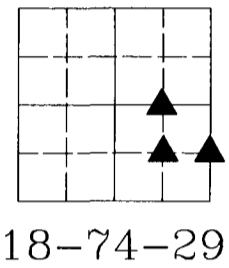
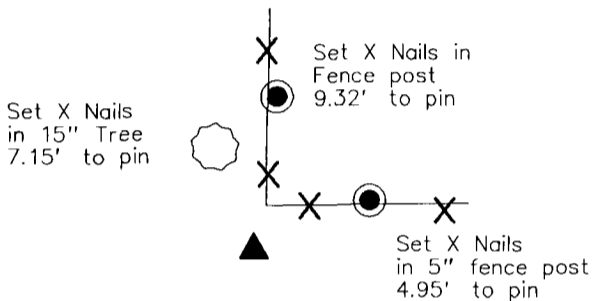
UNITED STATES PUBLIC LAND SURVEY CORNER CERTIFICATE of

LAND SURVEY MONUMENTS SITUATED IN SECTION 18, TOWNSHIP 74 N, RANGE 29 W, of the Fifth Principal Meridian, Madison County, Iowa.

Monument Description & Remarks:

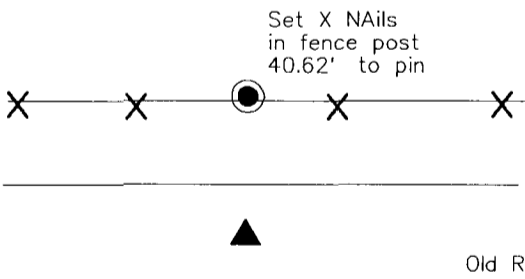
- NW Cor NE1/4 SE1/4 - Searched, found nothing - Set 1/2" IR YC 15982 - Set at South side of fence post, fences running North and East
- SW Cor NE1/4 SE1/4 - Searched, found nothing - Set 1/2" IR YC 15982 - Set between east/ west fences of old road, north of an South running fence
- SE Cor NE1/4 SE1/4 - Searched, found nothing - Set 1/2" IR YC 15982 - set online and equidistant from SE Corner and E1/4 Corner

PLAN VIEW

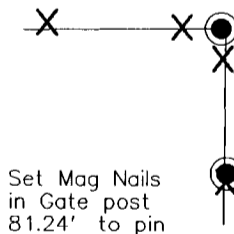


NW Cor NE1/4 SE1/4
Sec 18-74-29
1/2" IR YC 15982

SW Cor NE1/4 SE1/4
Sec 18-74-29
1/2" IR YC 15982



Set X Nails in
Corner post
67.11' to pin



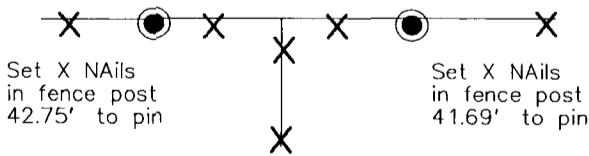
Bittersweet Road

Set X Nails
in power pole
104.97' to pin



Old Road Bed

SE Cor NE1/4 SE1/4
Sec 18-74-29
1/2" IR YC 15982



I HEREBY CERTIFY THAT THIS SURVEYING DOCUMENT WAS PREPARED AND THE RELATED WORK WAS PERFORMED BY ME OR UNDER MY DIRECT PERSONAL SUPERVISION, AND THAT I AM A DULY LICENSED PROFESSIONAL LAND SURVEYOR UNDER THE LAWS OF THE STATE OF IOWA.

Vincent E. Piagentini 6/17/21
VINCENT E. PIAGENTINI, IOWA LIC. NO 15982 DATE

MY LICENSE RENEWAL DATE IS DECEMBER 31, 2022.

ADDITIONAL PAGES CERTIFIED (NONE UNLESS INDICATED HERE) _____

This sheet only.



Corners to be Indexed:			
Corner	Section	Twp	Range
NW Cor NE1/4 SE1/4	18	T74N	R29W
SW Cor NE1/4 SE1/4	18	T74N	R29W
SE Cor NE1/4 SE1/4	18	T74N	R29W
SW Cor NW1/4 SW1/4	17	T74N	R29W