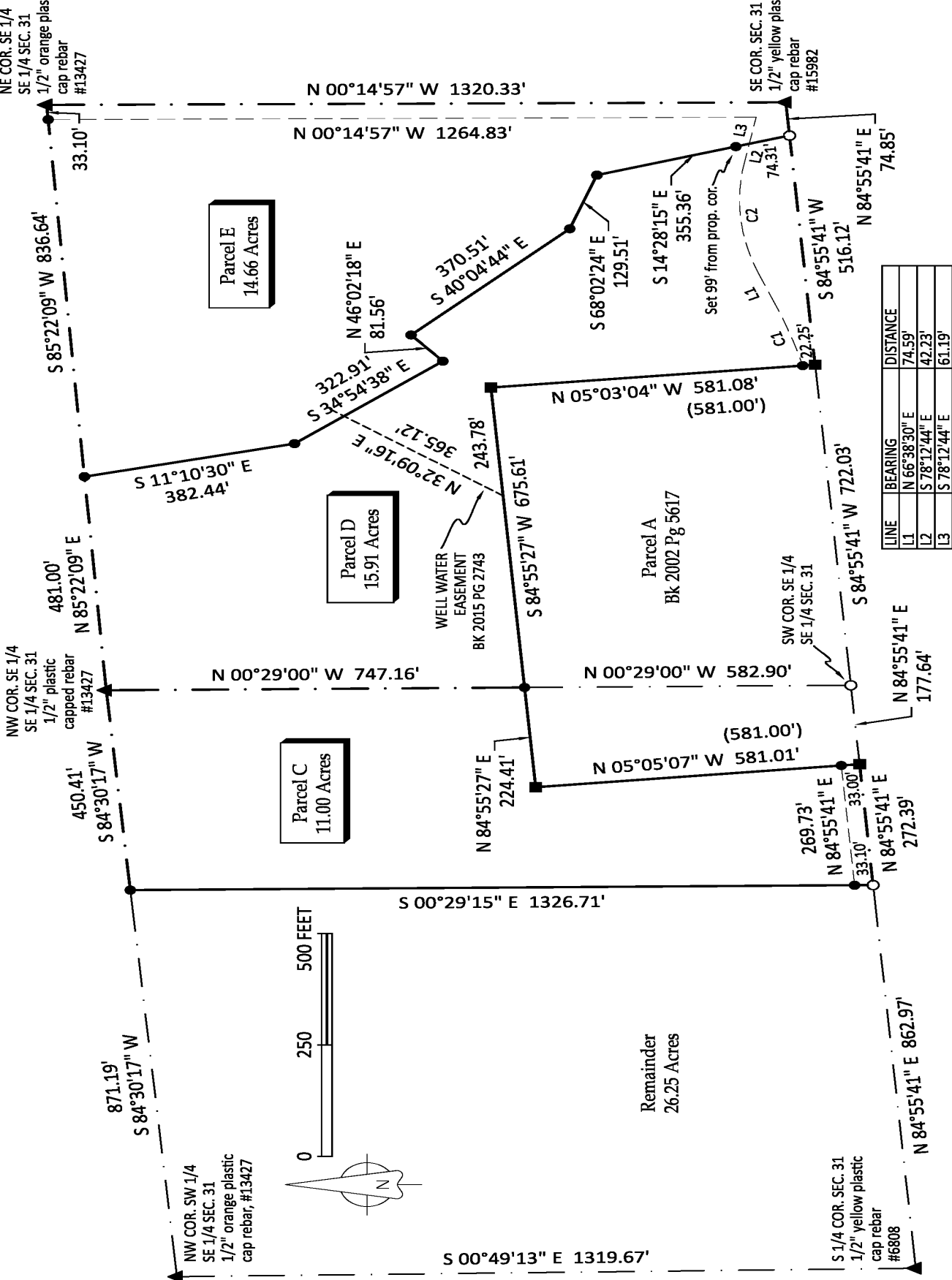


CURVE	RADIUS	ARC LENGTH	CHORD LENGTH	CHORD BEARING	DELTA ANGLE
C1	1112.92'	146.97'	146.86'	N 70°25'29" E	7°33'59"
C2	414.97'	254.55'	250.58'	N 84°12'53" E	35°08'47"



LINE	BEARING	DISTANCE
L1	N 66°38'30" E	74.59'
L2	S 78°12'44" E	42.23'
L3	S 78°12'44" E	61.19'