

**BK: 2021 PG: 1441**  
**Recorded: 4/8/2021 at 7:59:44.0 AM**  
**Pages 1**  
**County Recording Fee: \$7.00**  
**Iowa E-Filing Fee: \$3.13**  
**Combined Fee: \$10.13**  
**Revenue Tax:**  
**LISA SMITH RECORDER**  
**Madison County, Iowa**

PREPARED BY: CRAIG S. BOLDMAN 521 WEST GREEN STREET, WINTERSET, IA 50273 PHONE (515)462-9242

**UNITED STATES PUBLIC LAND SURVEY CORNER CERTIFICATE**

Land Survey Monuments situated in Section 24, Township 75N, Range 28W, the Fifth Principal Meridian, Madison County, Iowa.  
 Previously recorded in NONE FOUND in County Recorder's Office

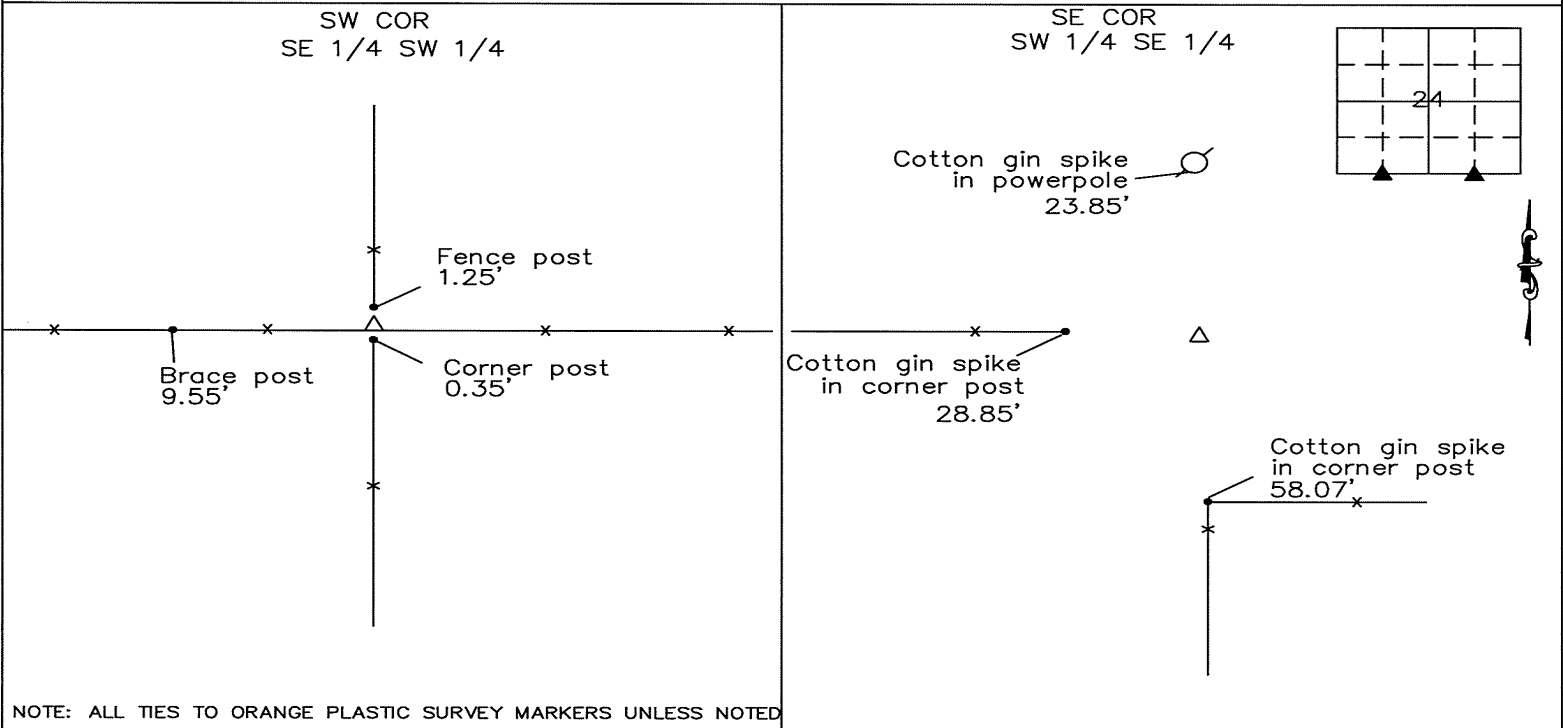
(Show reason for preparing this certificate, the evidence and detailed procedures used in establishing the corner positions & monumentation found or placed)

**Monument Description and Remarks:**

SW COR - Stone set by county surveyor. Found broken pieces of limestone Northside of old SE 1/4 SW 1/4 hedgepost. Set 5/8" rod w/ orange cap #13427 over pieces.

SE COR - Found 5/8" pin w/ yellow cap #1995. Retied because ties are missing

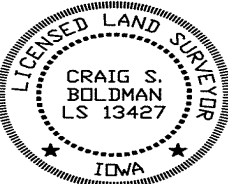
**PLAN-VIEW**



NOTE: ALL TIES TO ORANGE PLASTIC SURVEY MARKERS UNLESS NOTED

I HEREBY CERTIFY THAT THIS LAND SURVEYING DOCUMENT WAS PREPARED AND THE RELATED SURVEY WORK WAS PERFORMED BY ME OR UNDER MY DIRECT PERSONAL SUPERVISION AND THAT I AM A DULY LICENSED LAND SURVEYOR UNDER THE LAWS OF THE STATE OF IOWA

SIGNATURE Craig S. Boldman  
 CRAIG S. BOLDMAN  
 DATE: 7/7/21 LICENSE NO 13427  
 MY RENEWAL DATE IS DECEMBER 31, 2022  
 COVERS SHEETS 4 of 4



**CORNERS TO BE INDEXED**

Corners	Section	Township	Range
SW COR	24	75N	28W
SE 1/4 SW 1/4			
SE COR	24	75N	28W
SW 1/4 SE 1/4			

Project No. 21010