

BK: 2021 PG: 1155
Recorded: 3/22/2021 at 9:29:11.0 AM
Pages 1
County Recording Fee: \$7.00
Iowa E-Filing Fee: \$3.13
Combined Fee: \$10.13
Revenue Tax:
LISA SMITH RECORDER
Madison County, Iowa

PREPARED BY: CRAIG S. BOLDMAN 521 WEST GREEN STREET, WINTERSET, IA 50273 PHONE (515)462-9242

UNITED STATES PUBLIC LAND SURVEY CORNER CERTIFICATE

Land Survey Monuments situated in Section 10, Township 76N, Range 29W, the Fifth Principal Meridian, Madison County, Iowa.
 Previously recorded in None Found in County Recorder's Office

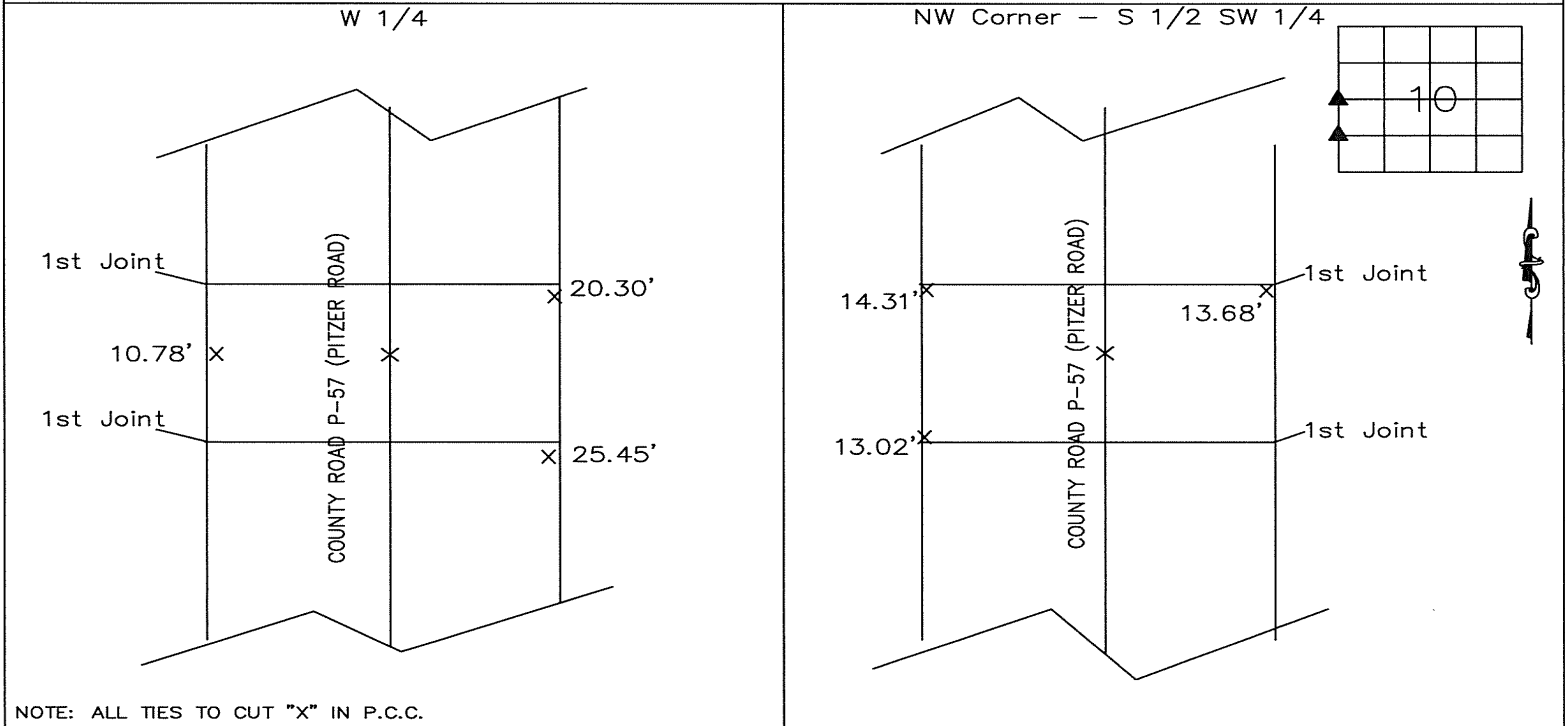
(Show reason for preparing this certificate, the evidence and detailed procedures used in establishing the corner positions & monumentation found or placed)

Monument Description and Remarks:

W 1/4 Corner - Corner was shown on survey filed in Book 2013 Page: 2245.
 Does not indicate it was set. Corner was set at midpoint between section corners and nearly agrees with plat.

NW Cor - S 1/2 SW 1/4 - Corner set at midpoint between found section corners. Distance agrees within reason of distance shown on County Surveyor's plat in Book 1 Page 387

PLAN-VIEW



NOTE: ALL TIES TO CUT "X" IN P.C.C.

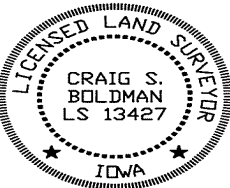
I HEREBY CERTIFY THAT THIS LAND SURVEYING DOCUMENT WAS PREPARED AND THE RELATED SURVEY WORK WAS PERFORMED BY ME OR UNDER MY DIRECT PERSONAL SUPERVISION AND THAT I AM A DULY LICENSED LAND SURVEYOR UNDER THE LAWS OF THE STATE OF IOWA

SIGNATURE Craig S. Boldman
 CRAIG S. BOLDMAN

DATE: 3/22/21 LICENSE NO 13427

MY RENEWAL DATE IS DECEMBER 31, 2022

COVERS SHEETS 111



CORNERS TO BE INDEXED

Corners	Section	Township	Range
W 1/4	10	76	29
NW Cor	10	76	29
S 1/2 SW 1/4			

Project No. 21004