



Document 2020 707

Book 2020 Page 707 Type 06 043 Pages 1
Date 3/09/2020 Time 10:56:02AM
Rec Amt \$7.00

INDX
ANNO
SCAN
CHEK

LISA SMITH, COUNTY RECORDER
MADISON COUNTY IOWA

RETURN TO: ASSOCIATED ENGINEERING COMPANY OF IOWA, 1830 SE PRINCETON DR. SUITE M GRIMES, IA 50111 (515) 255-3156

UNITED STATES PUBLIC LAND SURVEY CORNER CERTIFICATE OF

Land survey monuments situated in Section 30, Township 75, Range 26
of the Fifth Principal Meridian, MADISON County, Iowa. Previously recorded
in _____ in County Recorder's Office.

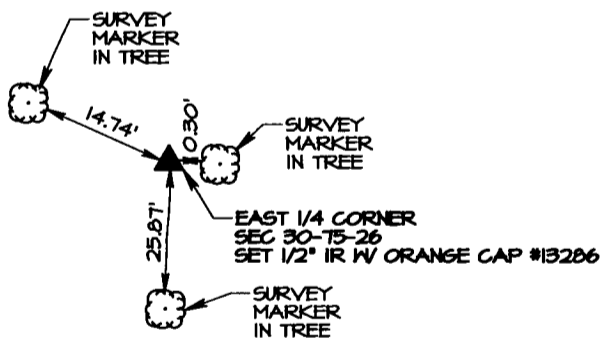
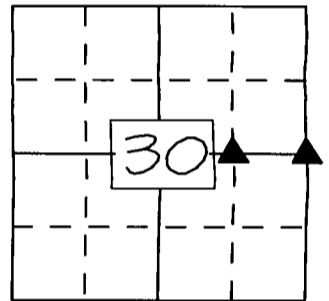
MONUMENT DESCRIPTION AND REMARKS:

EAST 1/4 CORNER - SET 1/2" IR W/ ORANGE CAP #13286 AT EVEN SPLIT BETWEEN THE
NE CORNER OF THE SE 1/4 NE 1/4 AND THE SE CORNER OF THE NW 1/4 SE 1/4.

SW CORNER NE 1/4 NE 1/4 - SET 1/2" IR W/ ORANGE CAP #13286 AT EVEN SPLIT
BETWEEN THE CENTER AND THE EAST 1/4 CORNER.

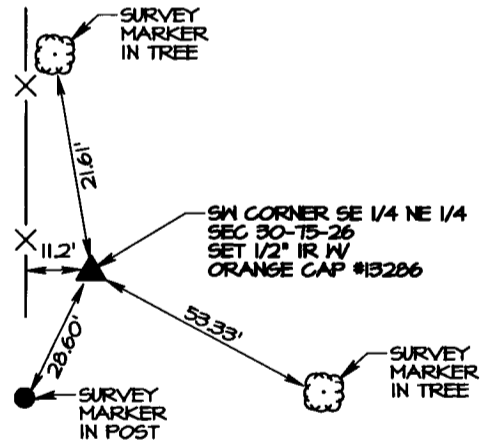
CORNERS WERE USED FOR A PLAT OF SURVEY.

PLAN - VIEW



EAST 1/4 CORNER

IOWA SOUTH ZONE STATE PLANE COORDINATE
N: 461339.80 E: 1534599.33
DISTANCES SLOPE CHAINED



SW CORNER SE 1/4 NE 1/4

IOWA SOUTH ZONE STATE PLANE COORDINATE
N: 461252.01 E: 1533280.48
DISTANCES SLOPE CHAINED

(ALL DISTANCES ARE HORIZONTAL UNLESS NOTED)

I HEREBY CERTIFY THAT THIS LAND SURVEYING DOCUMENT WAS PREPARED BY ME AND THE
RELATED SURVEY WORK WAS PERFORMED UNDER MY DIRECT SUPERVISION AND THAT I AM
A DULY LICENSED PROFESSIONAL LAND SURVEYOR UNDER THE LAWS OF THE STATE OF IOWA.
LICENSE RENEWAL DATE: DEC 31 2020 PAGES COVERED BY THIS SEAL: THIS PAGE ONLY

SIGNED: GREGORY L. ROSS DATE: 3/4/20
GREGORY L. ROSS P.L.S. 13286



CORNERS TO BE INDEXED

Corners Section-Township-Range

E 1/4 CORNER SECTION 30-75-26 SW CORNER SE 1/4 NE 1/4 SECTION 30-75-26