

**BK: 2020 PG: 453**  
**Recorded: 2/12/2020 at 11:04:20.0 AM**  
**Pages 1**  
**County Recording Fee: \$7.00**  
**Iowa E-Filing Fee: \$3.13**  
**Combined Fee: \$10.13**  
**Revenue Tax:**  
**LISA SMITH RECORDER**  
**Madison County, Iowa**

PREPARED BY & RETURN TO ERIC MILLER, SNYDER & ASSOCIATES, INC. 2727 SW SNYDER ROAD, ANKENY, IOWA 50023 (515) 964-2020

**UNITED STATES PUBLIC LAND SURVEY CORNER CERTIFICATE OF**

Land Survey Monuments situated in Section 36, Township 77, Range 26W, of the Fifth Principal Meridian, Madison, County, Iowa. Previously recorded in Bk 2009 Pg 5590 (Warren Co.) in County Recorder's Office.  
 (book, page, document number, ect.)

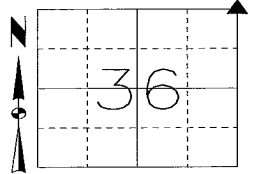
(Show reason for preparing this certificate, the evidence and detailed procedures used in establishing the corner positions and monumentation found or placed.)

Monument Description and Remarks:  
 NORTHEAST CORNER SECTION 36-77-26

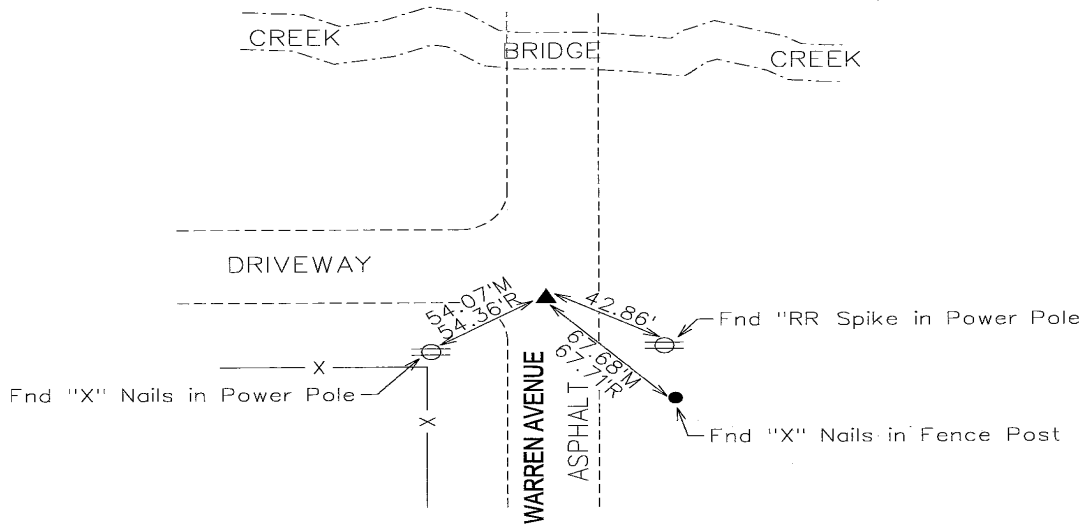
USED RECORDED CORNER CERTIFICATE AND A METAL DETECTOR TO FIND 1/2" REBAR 6" DEEP WITH UNREADABLE YELLOW PLASTIC CAP. VERIFIED MONUMENT LOCATION WITH TWO REMAINING TIES AND SURROUNDING FIELD EVIDENCE. ACCEPTED FOUND MONUMENT AS SECTION CORNER. THIS CERTIFICATE IS BEING FILED BECAUSE THERE ARE NO LONGER THREE VALID TIES OF RECORD.

Plan-View

(Show a minimum of three reference ties to durable physical objects, relevant monuments and physical conditions that will enable recovery of the corner.)



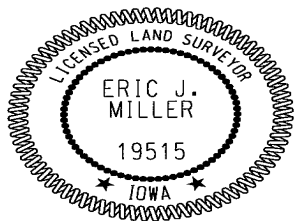
NORTHEAST CORNER  
 FOUND 1/2" REBAR WITH YELLOW PLASTIC CAP UNREADABLE



NOTE: ALL DISTANCES MEASURED HORIZONTAL UNLESS OTHERWISE NOTED.

S&A CHK3

EMILLER  
 2/12/2020  
 I:\Survey\Section\_Corners\S&A\_Section\_Certificate\TWP\_RNG\_SEC\_PROJECT\_NUM\77\_26\_36\_NE\_1160203.dgn



I hereby certify that this land surveying document was prepared and the related survey work was performed by me or under my direct personal supervision and that I am a duly licensed Land Surveyor under the laws of the State of Iowa.

*Eric J. Miller* 2-11-20  
 Eric J. Miller, PLS Date

License Number 19515  
 My License Renewal Date is December 31, 2020

Pages or sheets covered by this seal:  
 SHEET 1 OF 1

List Corners to be Indexed

Corners	Section	Twp	Range
NE CORNER-MADISON CO	36	77	26
SE CORNER-MADISON CO	25	77	26
NW CORNER-WARREN CO	31	77	25
SW CORNER-WARREN CO	30	77	25