

BK: 2020 PG: 450
Recorded: 2/11/2020 at 3:52:58.0 PM
Pages 1
County Recording Fee: \$7.00
Iowa E-Filing Fee: \$3.00
Combined Fee: \$10.00
Revenue Tax:
LISA SMITH RECORDER
Madison County, Iowa

RETURN TO: DANIELS LAND SURVEYING, 22598 18TH AVENUE, NEW VIRGINIA IA 50210 (515) 577-2583

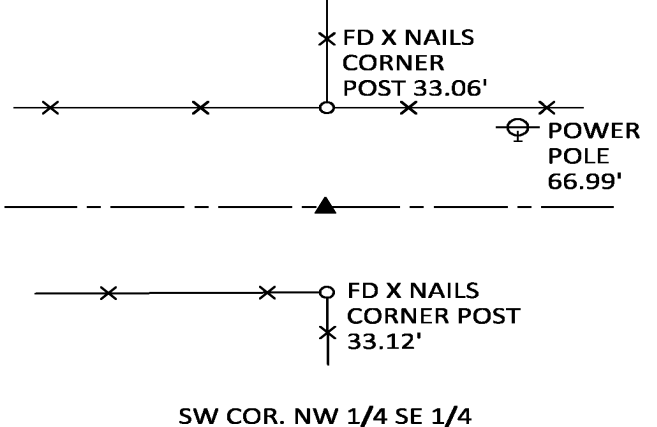
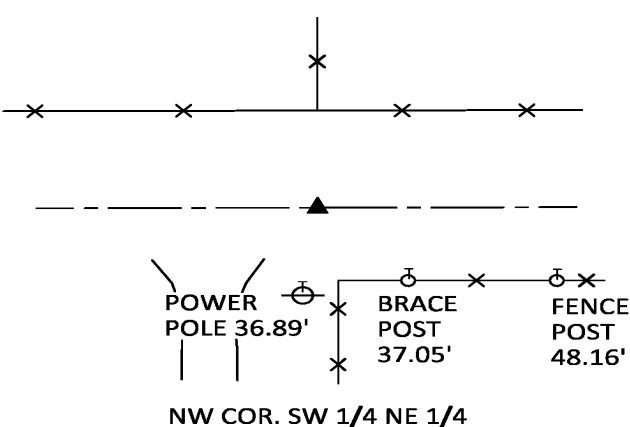
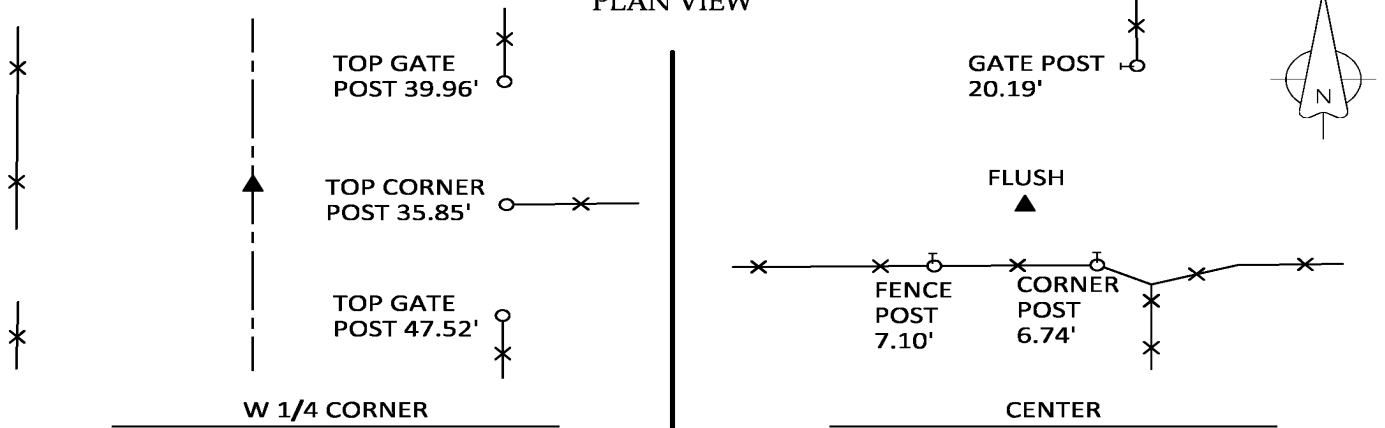
UNITED STATES PUBLIC LAND CORNER CERTIFICATE

Land Survey Monuments in Section 32, Township 77 North, Range 28 West of the 5th P.M., Madison County, Iowa.
 Previously recorded in SW COR. NW 1/4 SE 1/4 - BK 1 PG 111 in the County Recorder's Office

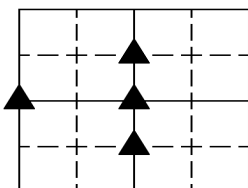
MONUMENT DESCRIPTIONS AND REMARKS:

CENTER - Set at intersection of 1/4 lines. **W 1/4 CORNER** - Set at 1/3 distance from NW cor. to NW Cor. SW 1/4 SW 1/4. **NW COR. SW 1/4 NE 1/4** - Set by traverse of Section. SW COR. NW 1/4 SE 1/4 - Unable to find previous monument. Reset corner from recorded certificate. Set monuments are 1/2" red plastic capped rebar, #17532.

PLAN VIEW

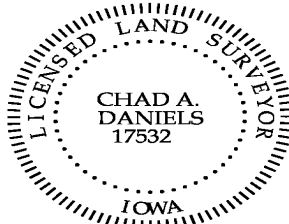


ALL TIES TO 30d SPIKES UNLESS NOTED



Section Number:
32

Project Number: 1336



I hereby certify that this surveying document was prepared by me and the related survey work was performed by me or under my direct personal supervision and that I am a duly licensed Land Surveyor under the laws of the State of Iowa.

Signed *Chad A. Daniels* 2/11/20
 Chad A. Daniels Date

Iowa License No. 17532
 My license renewal date is 12-31-2020