



Document 2020 3894

Book 2020 Page 3894 Type 06 043 Pages 1
Date 10/13/2020 Time 1:28:26PM
Rec Amt \$7.00

INDX
ANNO
SCAN
CHEK

LISA SMITH, COUNTY RECORDER
MADISON COUNTY IOWA

Prepared by: Vincent E. Piagentini, Abaci Consulting Inc, 3000 SE Grimes Blvd., Ste 800, Grimes IA, 50111; (515)986-5048

UNITED STATES PUBLIC LAND SURVEY CORNER CERTIFICATE

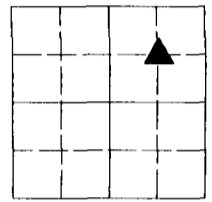
of

LAND SURVEY MONUMENTS SITUATED IN SECTION 24, TOWNSHIP 77 N, RANGE 26 W, of the Fifth Principal Meridian, Madison County, Iowa.

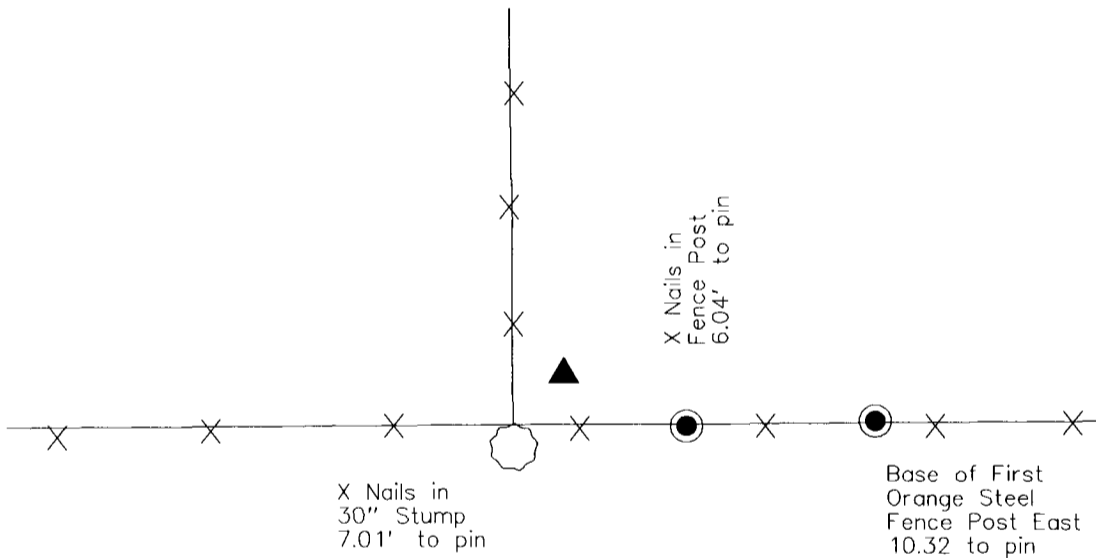
Monument Description & Remarks:

SW Cor NE1/4 NE1/4 - Searched, found nothing - Set 1/2" IR YC 15982 - Set online from SE Cor NE1/4 NE1/4 and a 1/2" IR YC 8105, as shown on survey of Parcel A in Book 2 Page 527, on East side of fence running North

PLAN VIEW



24-77-26



SW Corner NE1/4 NE1/4
Section 24-77-26
1/2" IR YC 15982



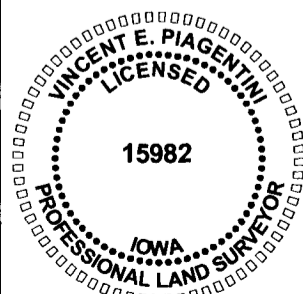
N.T.S.

I HEREBY CERTIFY THAT THIS SURVEYING DOCUMENT WAS PREPARED AND THE RELATED WORK WAS PERFORMED BY ME OR UNDER MY DIRECT PERSONAL SUPERVISION, AND THAT I AM A DULY LICENSED PROFESSIONAL LAND SURVEYOR UNDER THE LAWS OF THE STATE OF IOWA.

Vincent E. Piagentini 10/13/2020
VINCENT E. PIAGENTINI, IOWA LIC. NO 15982 DATE

MY LICENSE RENEWAL DATE IS DECEMBER 31, 2020.

ADDITIONAL PAGES CERTIFIED (NONE UNLESS INDICATED HERE) This sheet only.



Corners to be Indexed:
Corner Section Twp Range
SW Cor NE1/4 NE1/4 24 T77N R26W