

LISA SMITH, COUNTY RECORDER  
MADISON COUNTY IOWA

Prepared by: Vincent E. Piagentini, Abaci Consulting Inc, 3000 SE Grimes Blvd., Ste 800, Grimes IA, 50111; (515)986-5048

# UNITED STATES PUBLIC LAND SURVEY CORNER CERTIFICATE

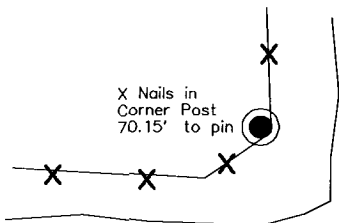
of

LAND SURVEY MONUMENTS SITUATED IN SECTION 14, TOWNSHIP 77 N, RANGE 28 W, of the Fifth Principal Meridian, Madison County, Iowa.

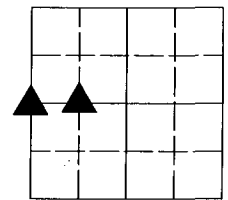
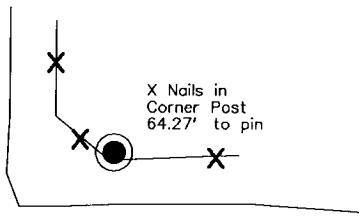
### Monument Description & Remarks:

W1/4 Corner - Fnd 1/2" IR 2" Deep - ties need updating, used for survey in NW1/4SW1/4  
NE Cor NW1/4 SW1/4 - Fnd 1/2" IR - 2" Deep - ties need updating, used for survey in NW1/4 SW1/4

## PLAN VIEW

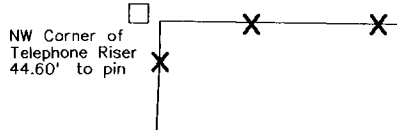


Kiowa Avenue

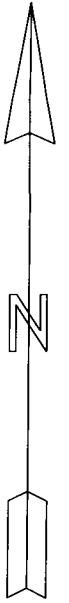
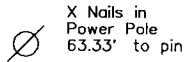


14-77-28

120th Street

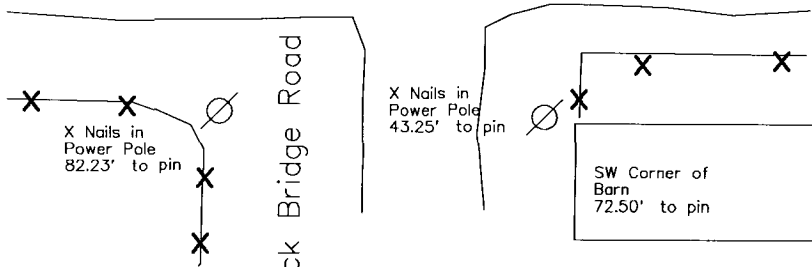


W1/4 Corner  
1/2" IR



N.T.S.

120th Street



Logback Bridge Road

NW Corner  
NW1/4 SW1/4  
1/2" IR

19198

I HEREBY CERTIFY THAT THIS SURVEYING DOCUMENT WAS PREPARED AND THE RELATED WORK WAS PERFORMED BY ME OR UNDER MY DIRECT PERSONAL SUPERVISION, AND THAT I AM A DULY LICENSED PROFESSIONAL LAND SURVEYOR UNDER THE LAWS OF THE STATE OF IOWA.

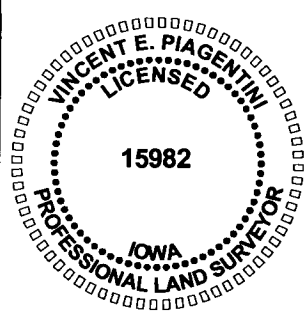
*Vincent E. Piagentini*

8/26/19

VINCENT E. PIAGENTINI, IOWA LIC. NO 15982 DATE

MY LICENSE RENEWAL DATE IS DECEMBER 31, 2020.

ADDITIONAL PAGES CERTIFIED (NONE UNLESS INDICATED HERE) This sheet only.



Corners to be Indexed:		
Corner	Section	Twp Range
W1/4		14-77-28
E1/4		15-77-28
NW Cor	NW1/4 SW1/4	14-77-28